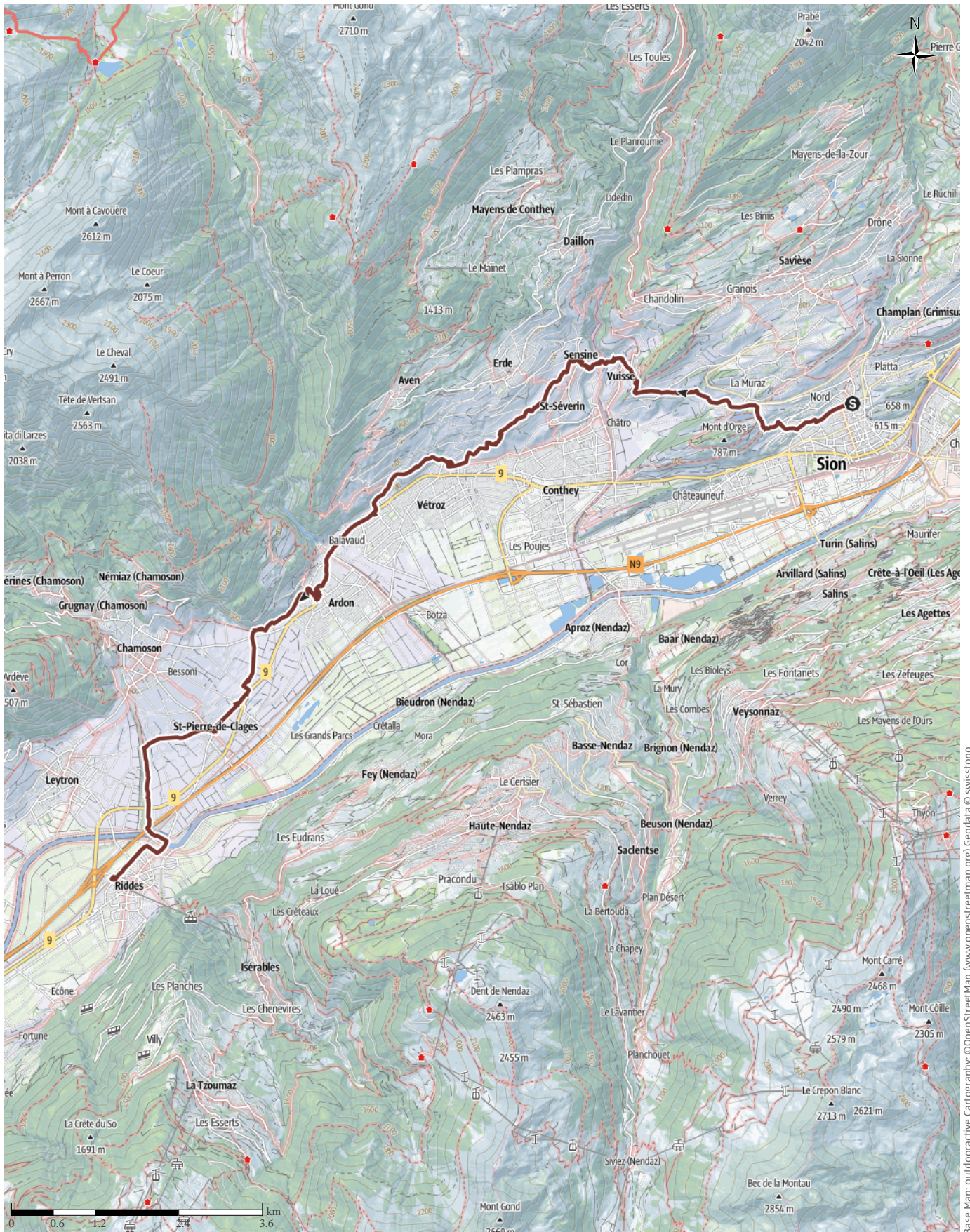


V11 Way of St. James (Camino) Sion to Riddes

↔ 22.7 km | ⌚ 6:51 h | ⬆️ 410 m | ⬆️ 463 m | Difficulty -



V11 Way of St. James (Camino) Sion to Riddes

← 22.7 km

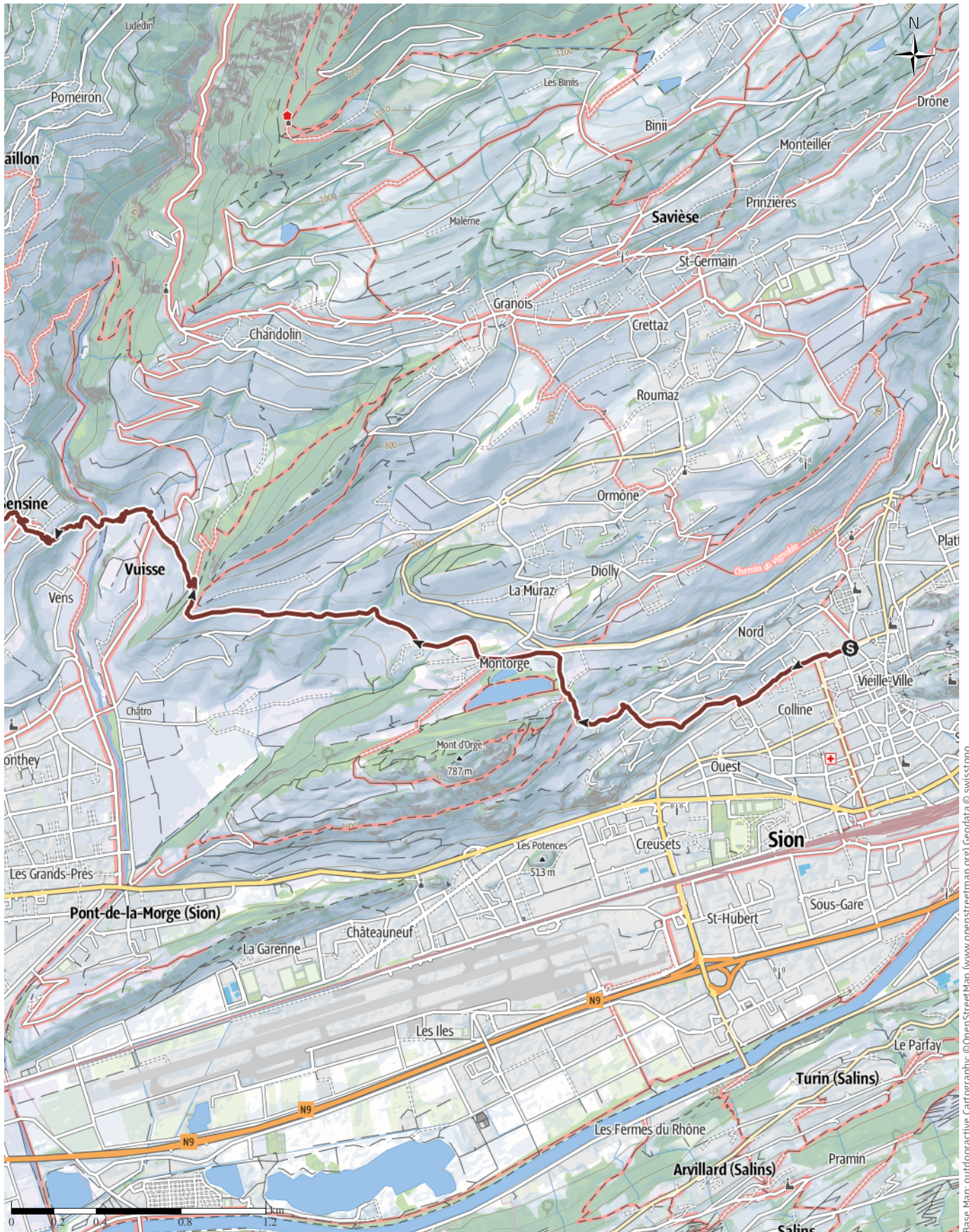
🕒 6:51 h

▲ 410 m

▼ 463 m

Difficulty

-



Base Map: outdooractive Cartography. © OpenStreetMap (www.openstreetmap.org) Geodata © swisstopo

V11 Way of St. James (Camino) Sion to Riddes

↔ 22.7 km

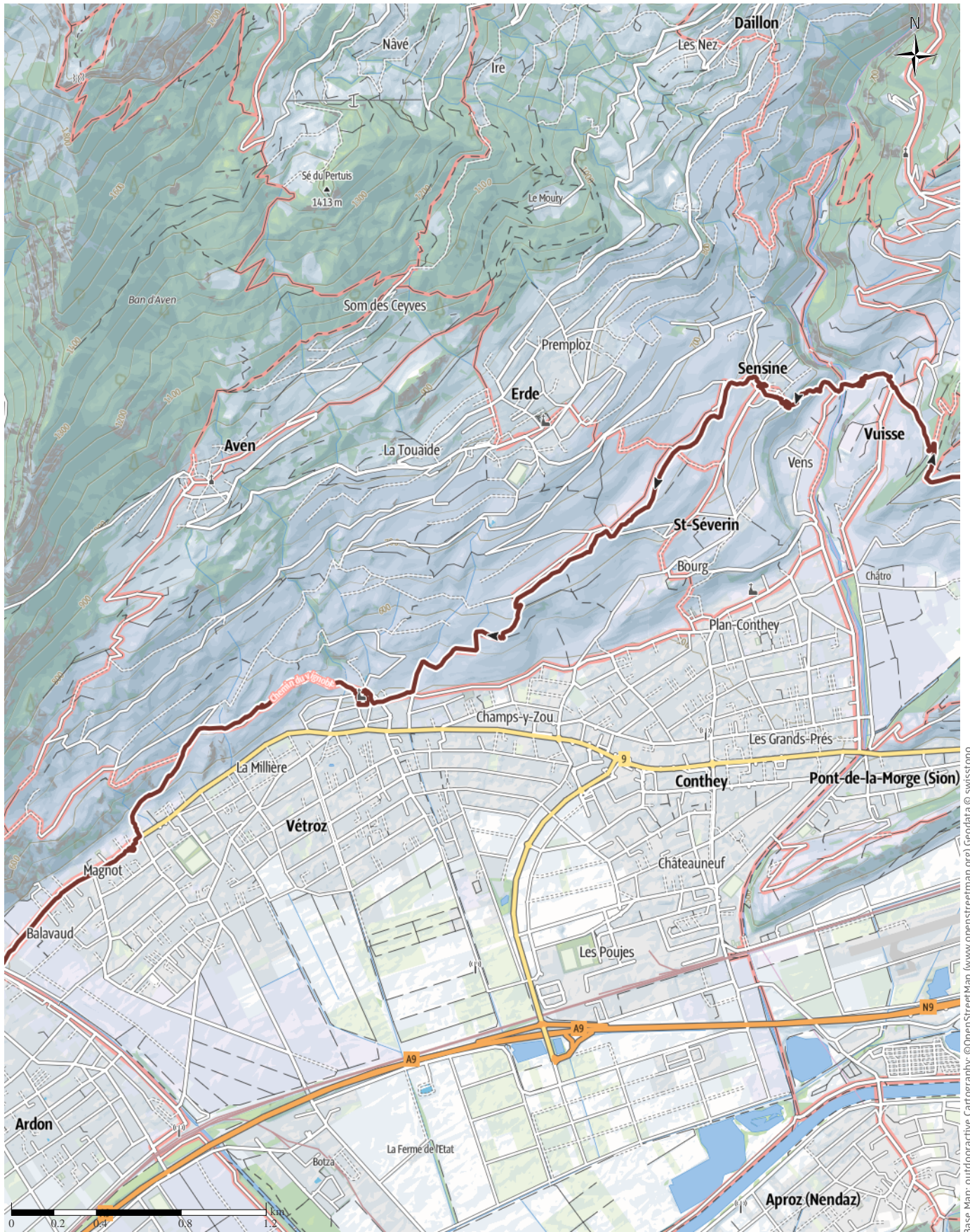
🕒 6:51 h

▲ 410 m

▼ 463 m

Difficulty

-



Base Map: outdooractive Cartography. © OpenStreetMap (www.openstreetmap.org) Geodata © swisstopo

V11 Way of St. James (Camino) Sion to Riddes

↔ 22.7 km

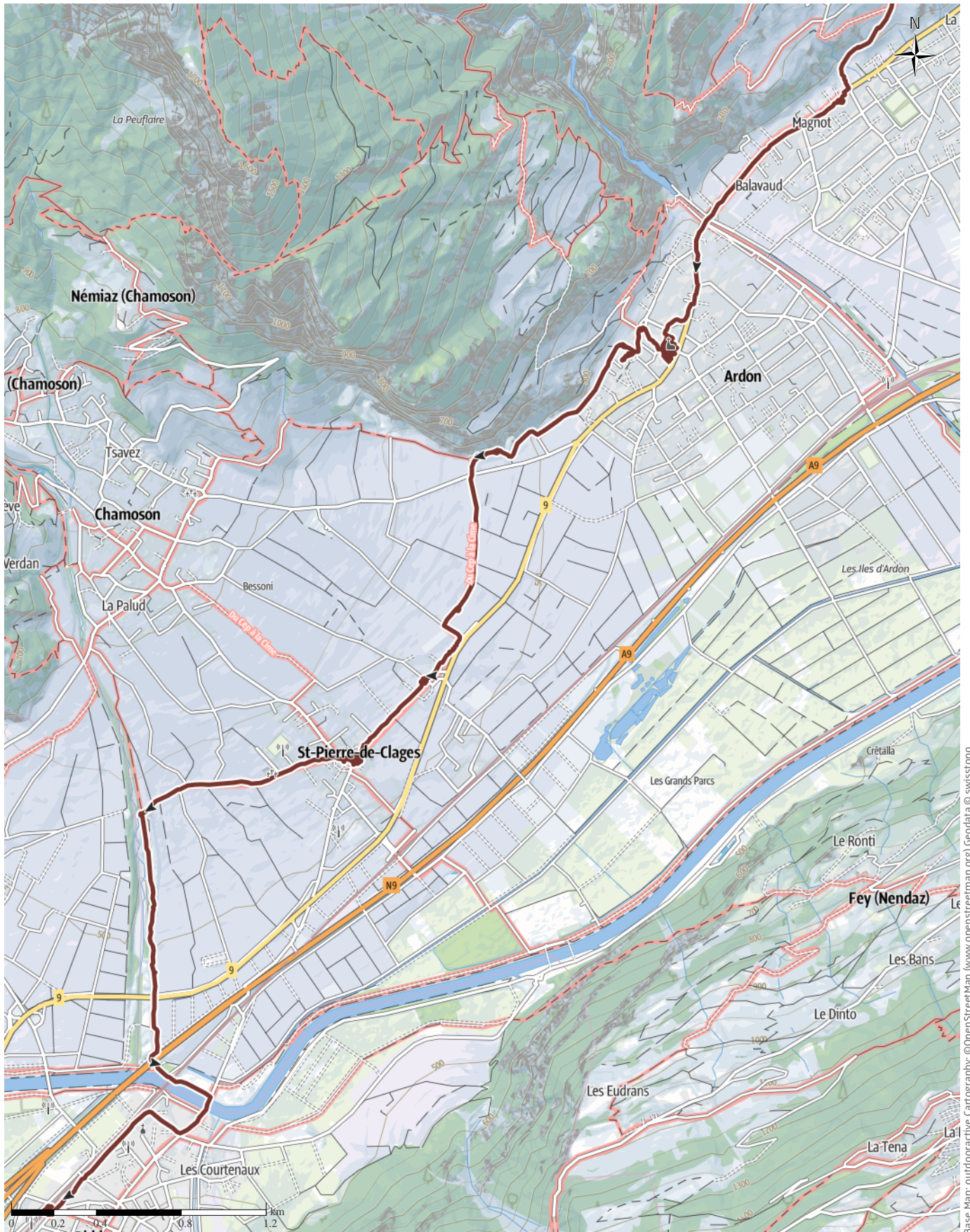
🕒 6:51 h

⬆️ 410 m

⬆️ 463 m

Difficulty

-



Base Map: outdooractive Cartography, ©OpenStreetMap (www.openstreetmap.org) Geodata © swisstopo

V11 Way of St. James (Camino) Sion to Riddes

↔ 22.7 km

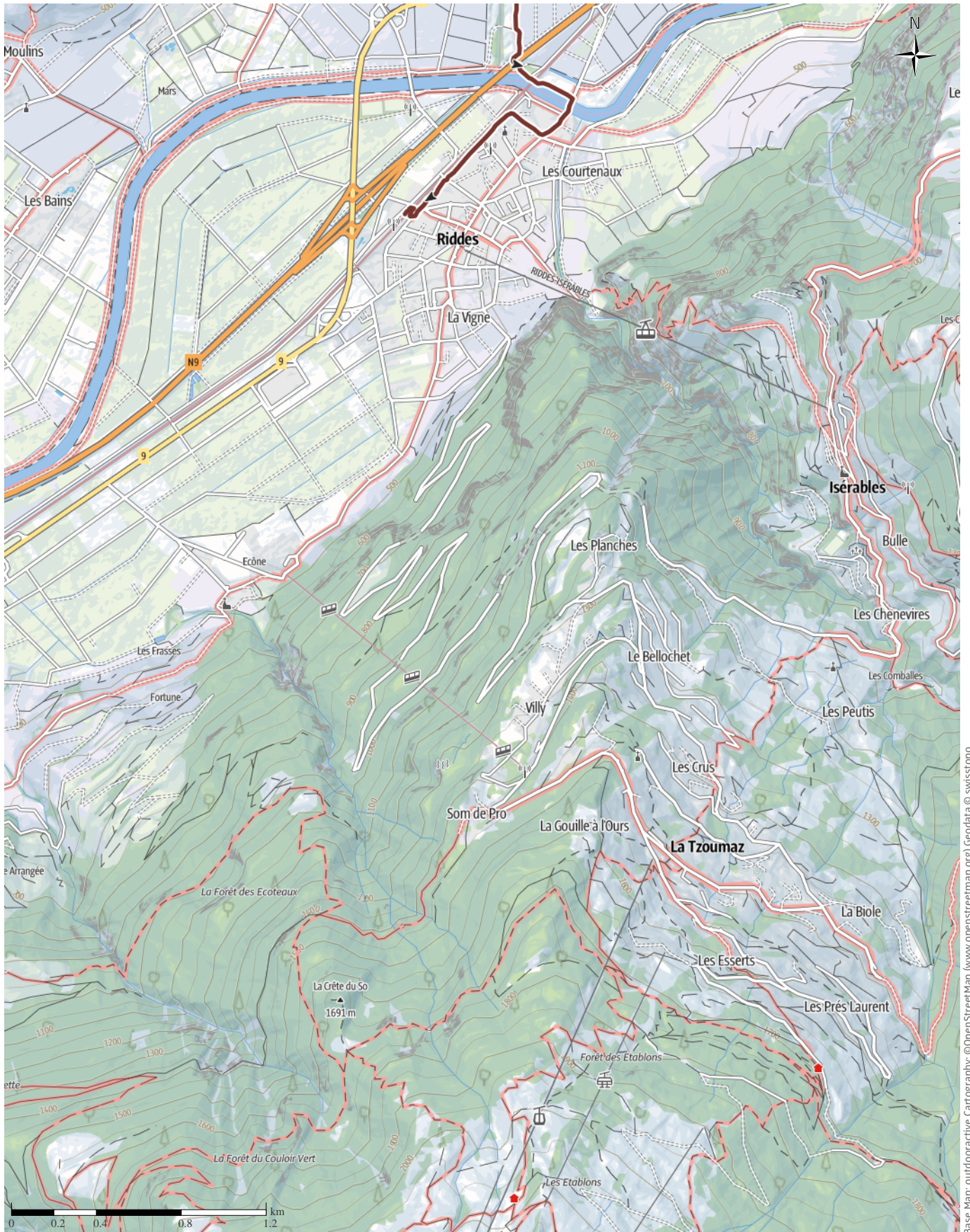
🕒 6:51 h

⬆️ 410 m

⬆️ 463 m

Difficulty

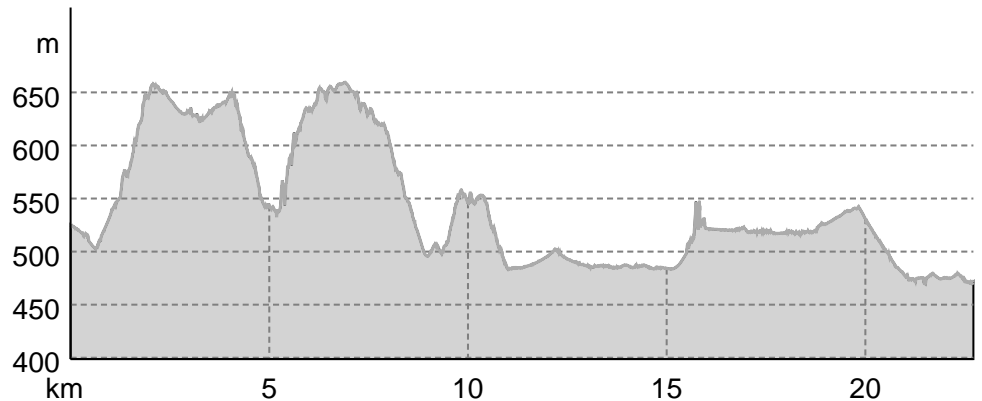
-



Base Map: outdooractive Cartography. ©OpenStreetMap (www.openstreetmap.org) Geodata © swisstopo

V11 Way of St. James (Camino) Sion to Riddes

Elevation profile



route data

Pilgrim Walk

Distance ↔ 22.7 km

Duration ⌚ 6:51 h

Ascent ▲ 410 m

Descent ▼ 463 m

Difficulty -

Stamina ●●●●●●

Technique ●●●●●●

Altitude

Best time of year

JAN | FEB | MAR
 APR | MAY | JUN
 JUL | AUG | SEP
 OCT | NOV | DEC

Ratings

Authors

Experience ●●●●●●

Landscape ●●●●●●

Community

More route data



Angus Carrick

Updated: May 02, 2021

Through endless vineyards, sometimes flat, sometimes undulating, with a few interesting places on the way. One highlight was the Romanesque church of Saint-Pierre-des-Clages.

Setting off, leaving Sion in the distance, we walked through endless vineyards, sometimes flat, sometimes undulating, with a few interesting places on the way. One highlight was the Romanesque church of Saint-Pierre-des-Clages. It was a hot, dry day without much shade or water, or even sitting possibilities! We were allowed to sit for a few minutes and have a coffee and glass of water at the Restaurant du Raisin, despite not having a reservation, (this was the first week of terraces

being open) and later we found some shade in Ardon in order to picnic. We didn't stop to sample the Swiss whisky in Ardon, though! Riddes was a convient place from where to take the train home.

Protected areas 🌿

Federal landscape inventory Mont d'Orge près de Sion

Federal landscape inventory Diablerets-Vallon de Nant-Derborance (Partie est)

The following rules may apply in protected areas:

Please note the local information on nature conservation.

Takeaway route for iPhone and Android



Scan QR code, save this route offline, share with friends and more...

Website

<https://out.ac/IOnpqT>

V11 Way of St. James (Camino) Sion to Riddes



Photo: Angus Carrick, Community