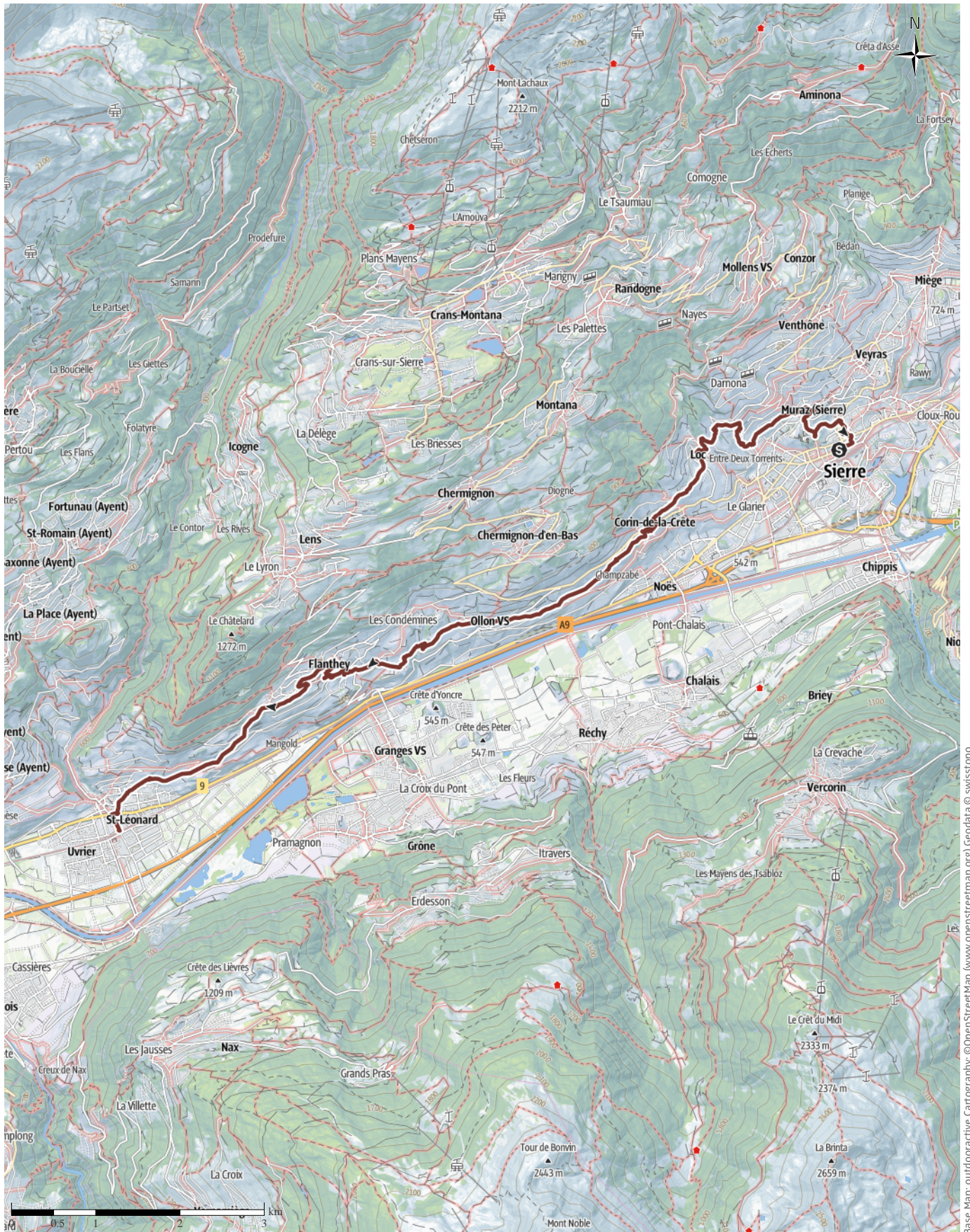


# 20210417\_Sierre-StLéonard

↔ 17.6 km | ⌚ 5:46 h | ▲ 395 m | ▼ 426 m | Difficulty -



Base Map: outdooractive Cartography. ©OpenStreetMap (www.openstreetmap.org) Geodata © swisstopo



# 20210417\_Sierre-StLéonard

↔ 17.6 km

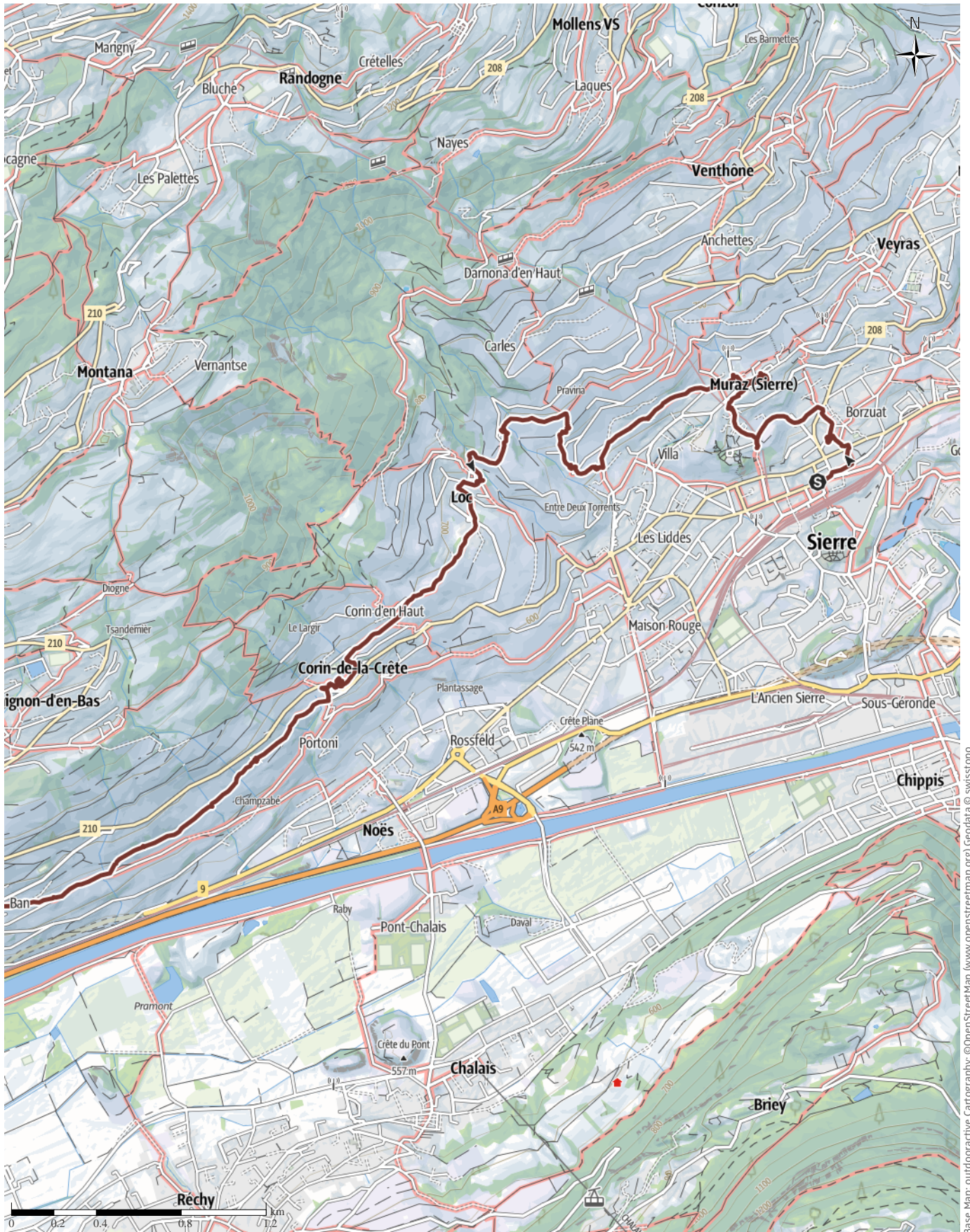
🕒 5:46 h

▲ 395 m

▼ 426 m

Difficulty

-



Base Map: outdooractive Cartography; ©OpenStreetMap (www.openstreetmap.org) Geodata © swisstopo



# 20210417\_Sierre-StLéonard

↔ 17.6 km

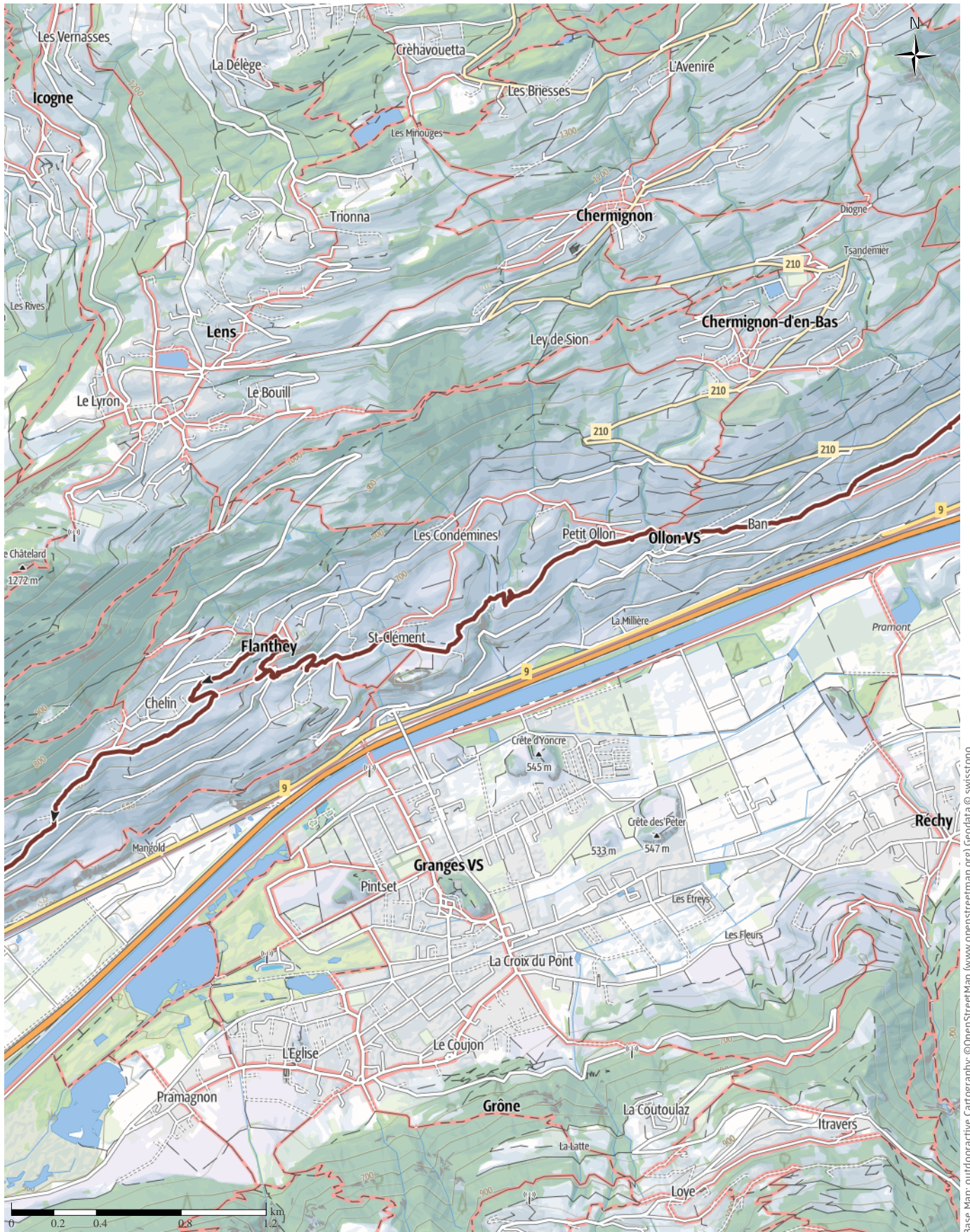
🕒 5:46 h

▲ 395 m

▼ 426 m

Difficulty

-



Base Map: outdooractive Cartography. ©OpenStreetMap (www.openstreetmap.org) Geodata © swisstopo



20210417\_Sierre-StLéonard

← 17.6 km

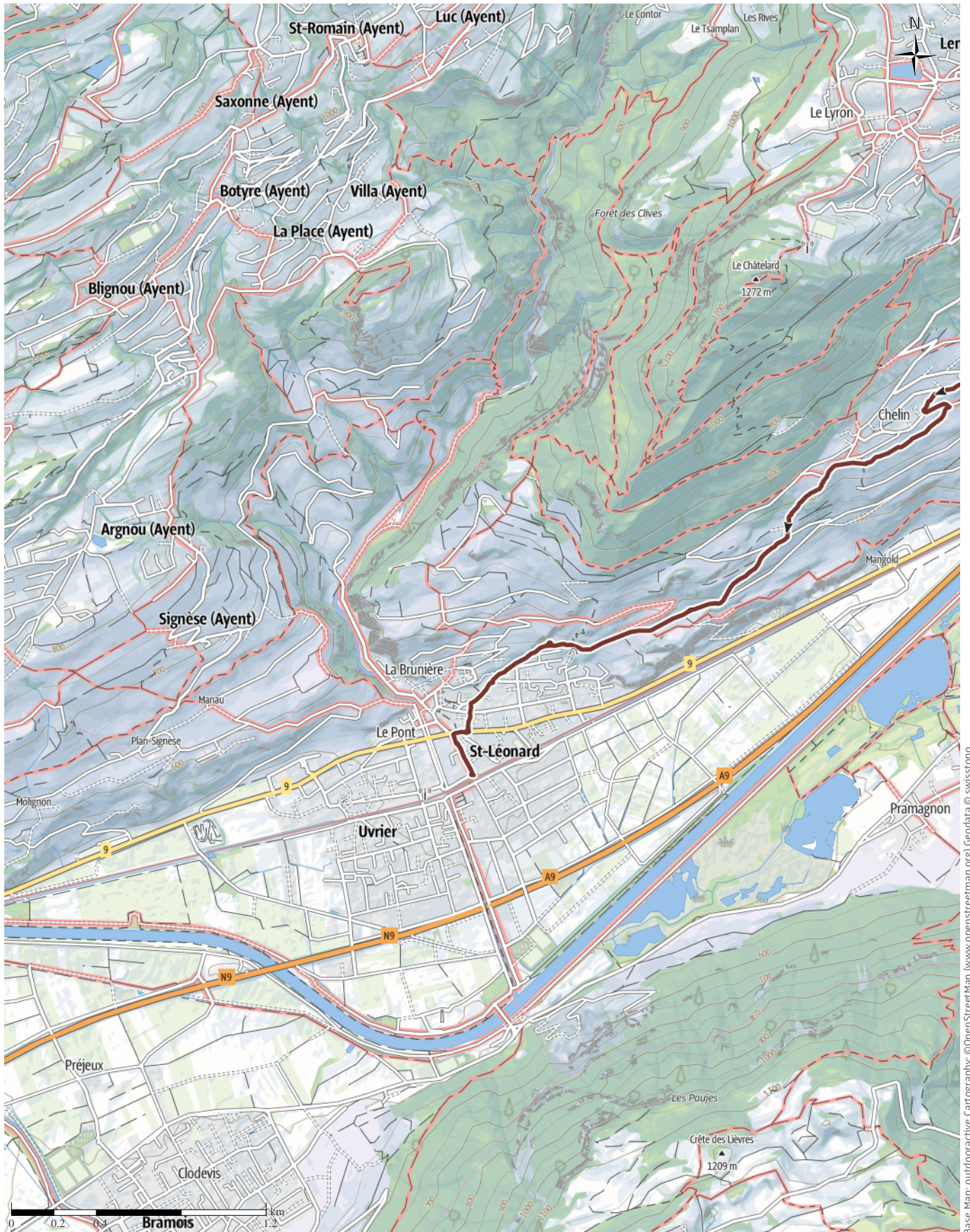
🕒 5:46 h

▲ 395 m

▼ 426 m

Difficulty

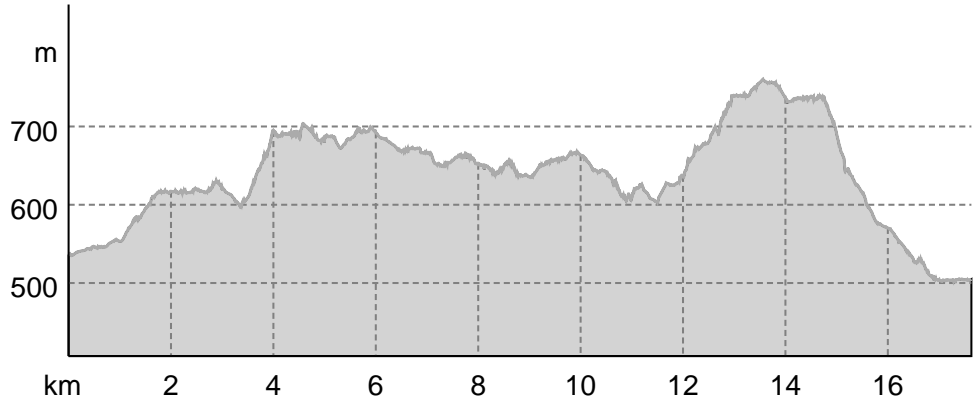
-



Base Map: outdooractive Cartography, ©OpenStreetMap (www.openstreetmap.org) Geodata © swisstopo



Elevation profile



route data

Pilgrim Walk

Distance ↔ 17.6 km  
 Duration ⌚ 5:46 h  
 Ascent ▲ 395 m  
 Descent ▼ 426 m

Difficulty -  
 Stamina ●●●●●●  
 Technique ●●●●●●  
 Altitude  
 760 m  
 502 m

Best time of year

JAN | FEB | MAR  
 APR | MAY | JUN  
 JUL | AUG | SEP  
 OCT | NOV | DEC

Ratings

Authors ●●●●●●  
 Experience ●●●●●●  
 Landscape ●●●●●●  
 Community

More route data



Angus Carrick  
 Updated: April 18, 2021

An undulating walk through the vineyards between Sierre and St. Léonard, with a few interesting churches on the way.

We returned to Sierre by train, and set off to locate the original parish church of Sierre, Notre Dame des Marais. From there we wound our way up through the town to the old village of Muraz and its church, before working our way back across above the Villa area, renowned for Wine and Raclette. to the Chapel of St. Gimier From there followed a strenuous up, down, round and through the vineyards, working our way down to St. Léonard, with the highest point of the route being the church of Flanthey. After passing through some interesting

Wineries and expensive houses, we took a long path sloping downhill to St. Léonard, where we discovered that the railway station was being rebuilt, and so we had to take a bus back to Sierre and hence home

Takeaway route for iPhone and Android



Scan QR code, save this route offline, share with friends and more...

Website  
<https://out.ac/IOMhuT>



20210417\_Sierre-StLéonard



Jakobsweg: Sierre to St.Léonard.  
Photo: Angus Carrick, Community