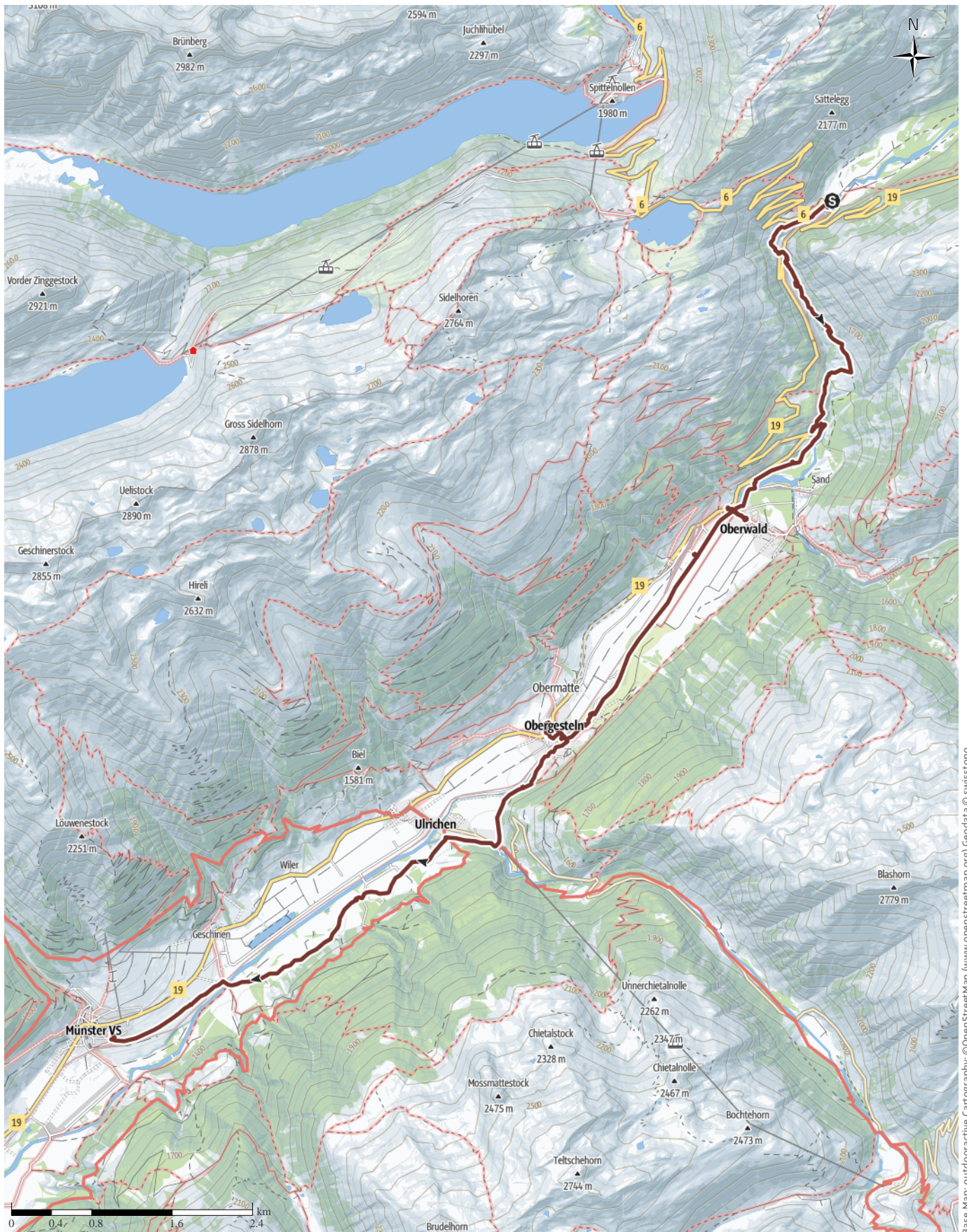


V00 Way of St. James (Camino) Gletsch to Münster

↔ 17.9 km | ⌚ 5:07 h | ⚡ 95 m | 🏔 473 m | Difficulty -



Base Map: outdooractive Cartography. ©OpenStreetMap (www.openstreetmap.org) Geodata © swisstopo

V00 Way of St. James (Camino) Gletsch to Münster

↔ 17.9 km

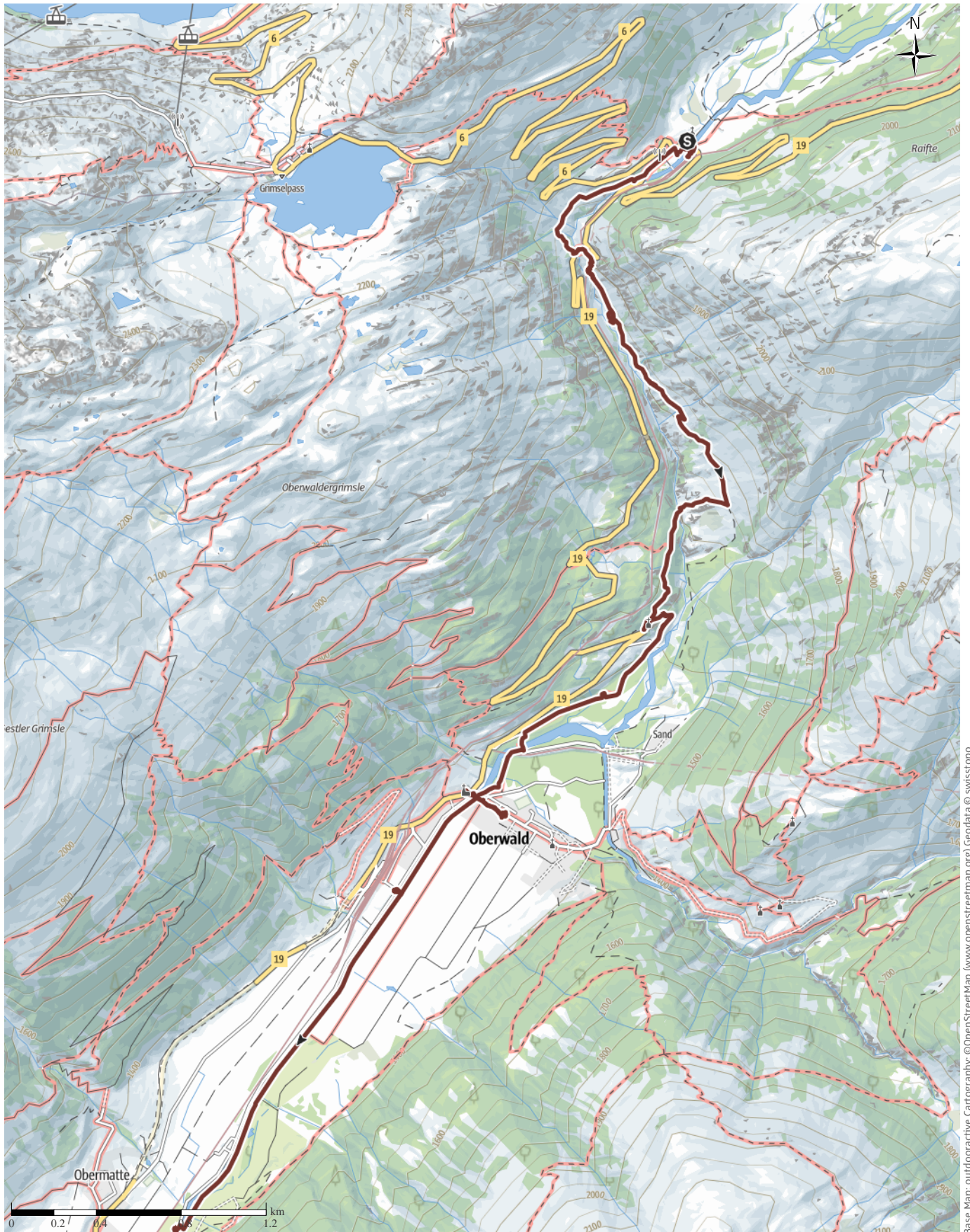
🕒 5:07 h

▲ 95 m

▼ 473 m

Difficulty

-



Base Map: outdooractive Cartography, ©OpenStreetMap (www.openstreetmap.org) GeoData © swisstopo

V00 Way of St. James (Camino) Gletsch to Münster

↔ 17.9 km

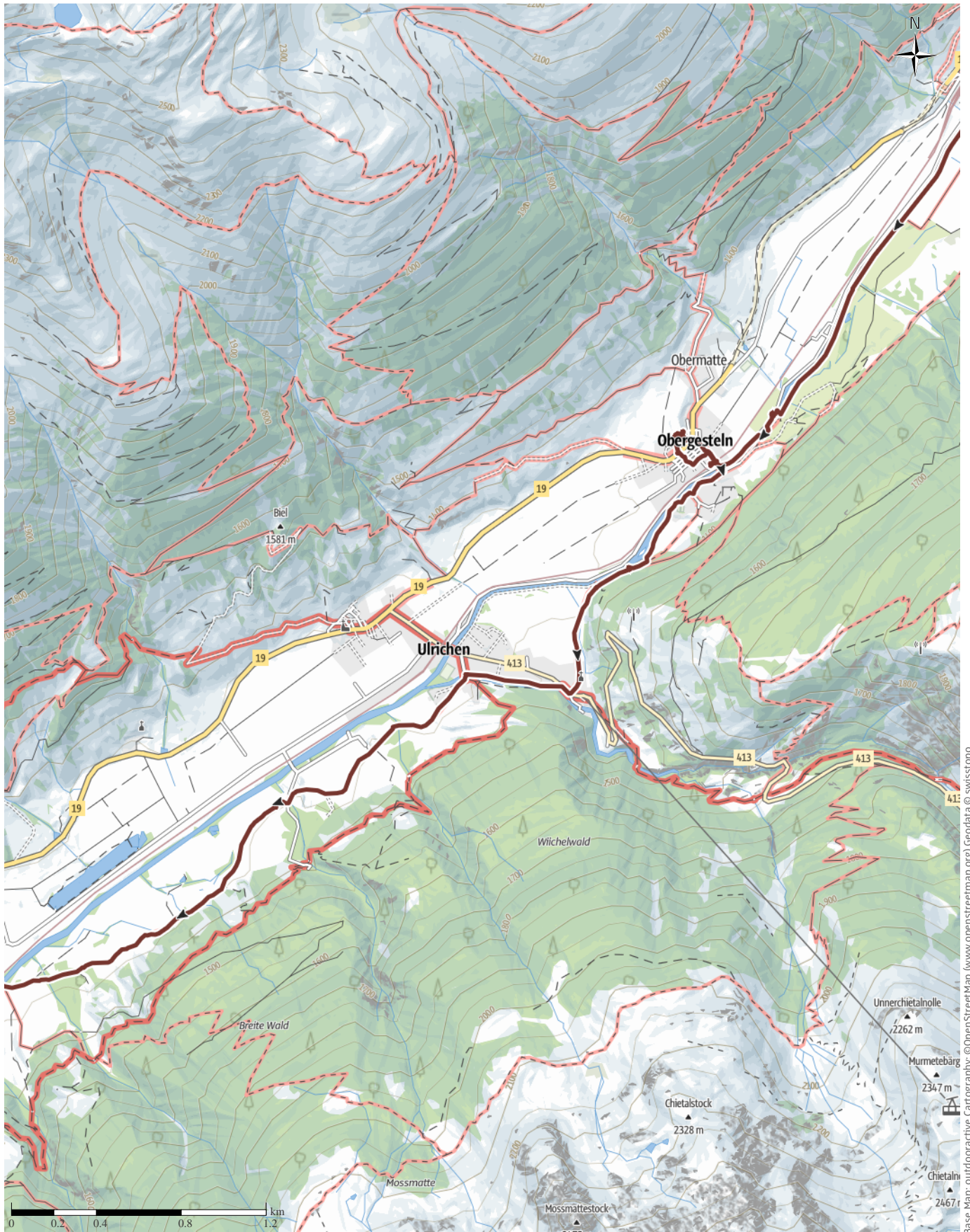
🕒 5:07 h

▲ 95 m

▼ 473 m

Difficulty

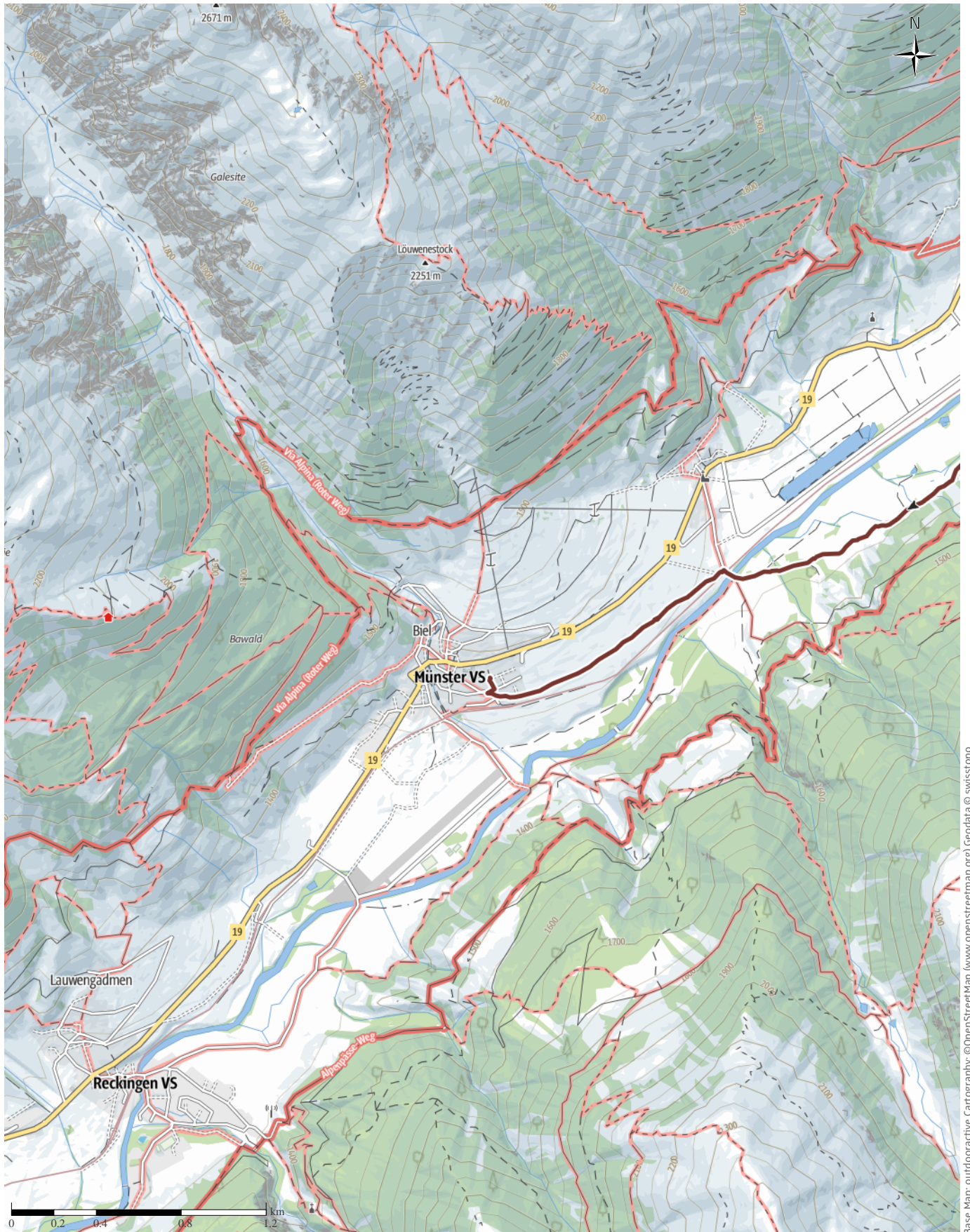
-



Base Map: outdooractive Cartography. © OpenStreetMap (www.openstreetmap.org) Geodata © swisstopo

V00 Way of St. James (Camino) Gletsch to Münster

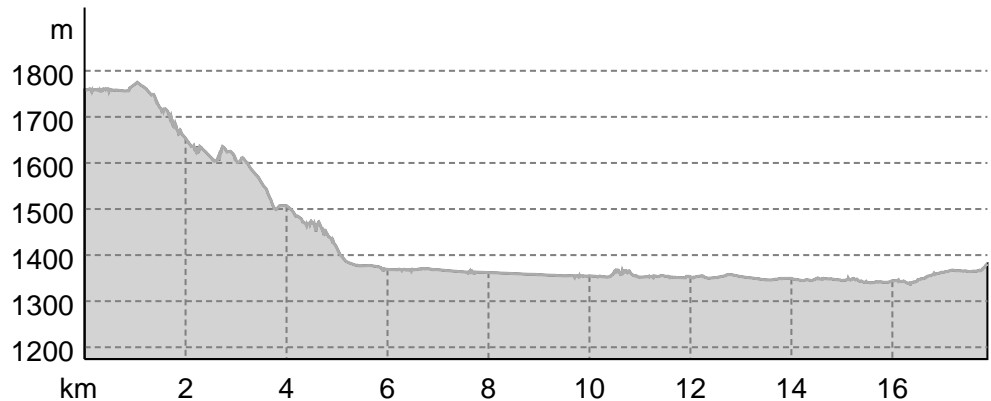
↔ 17.9 km | ⌚ 5:07 h | ▲ 95 m | ▼ 473 m | Difficulty -



Base Map: outdooractive Cartography; ©OpenStreetMap (www.openstreetmap.org) Geodata © swisstopo

V00 Way of St. James (Camino) Gletsch to Münster

Elevation profile



route data

Pilgrim Walk

Distance ↔ 17.9 km

Duration ⌚ 5:07 h

Ascent ▲ 95 m

Descent ▼ 473 m

Difficulty -

Stamina ●●●●●●

Technique ●●●●●●

Altitude

 1,775 m
 1,337 m

Best time of year

JAN | FEB | MAR
 APR | MAY | JUN
 JUL | AUG | SEP
 OCT | NOV | DEC

Ratings

Authors

Experience ●●●●●●

Landscape ●●●●●●

Community

More route data



Angus Carrick

Updated: July 04, 2021

As the Furka was closed due to snow, we took the bus to Gletsch and walked from there. This was the start of the Rhone part of the way in Valais!

We took the post bus to Gletsch, where the road splits to the Grimsel pass on one side and the Furka pass on the other. It was out of season, and everything was closed. The English church seemed to be used as a store house for the neighbouring, closed, restaurant, and the museum and train depot. Once upon a time, the Rhône glacier came to here. We ambled down the valley, with the Rhône beneath us and the main road on the other side of the valley, passing a small chapel with a pilgrim stamp. As the river widened lower down, we arrived at Oberwald in the wide, flatter part of the Rhône valley. Interestingly, this was one of the places, where, on a trip over the Grimsel, the Jakobsweg had

drawn attention to itself! The rest of the walk to Münster, where we were basing ourselves for the next week, was fairly flat and uneventful.

More pictures on our website Angus & Sue's Jakobsweg

Protected areas

- Federal landscape inventory Rhonegletscher
- Federal landscape inventory Sand
- Federal landscape inventory Triest
- Federal landscape inventory Rhônegletscher mit Vorgelände

Some or all of the following may apply in protected areas:

- Observe local conservation rules and information

Takeaway route for iPhone and Android

V00 Way of St. James (Camino) Gletsch to Münster



Scan QR code, save this route offline, share with friends and more...

Website

<https://out.ac/lZei9v>