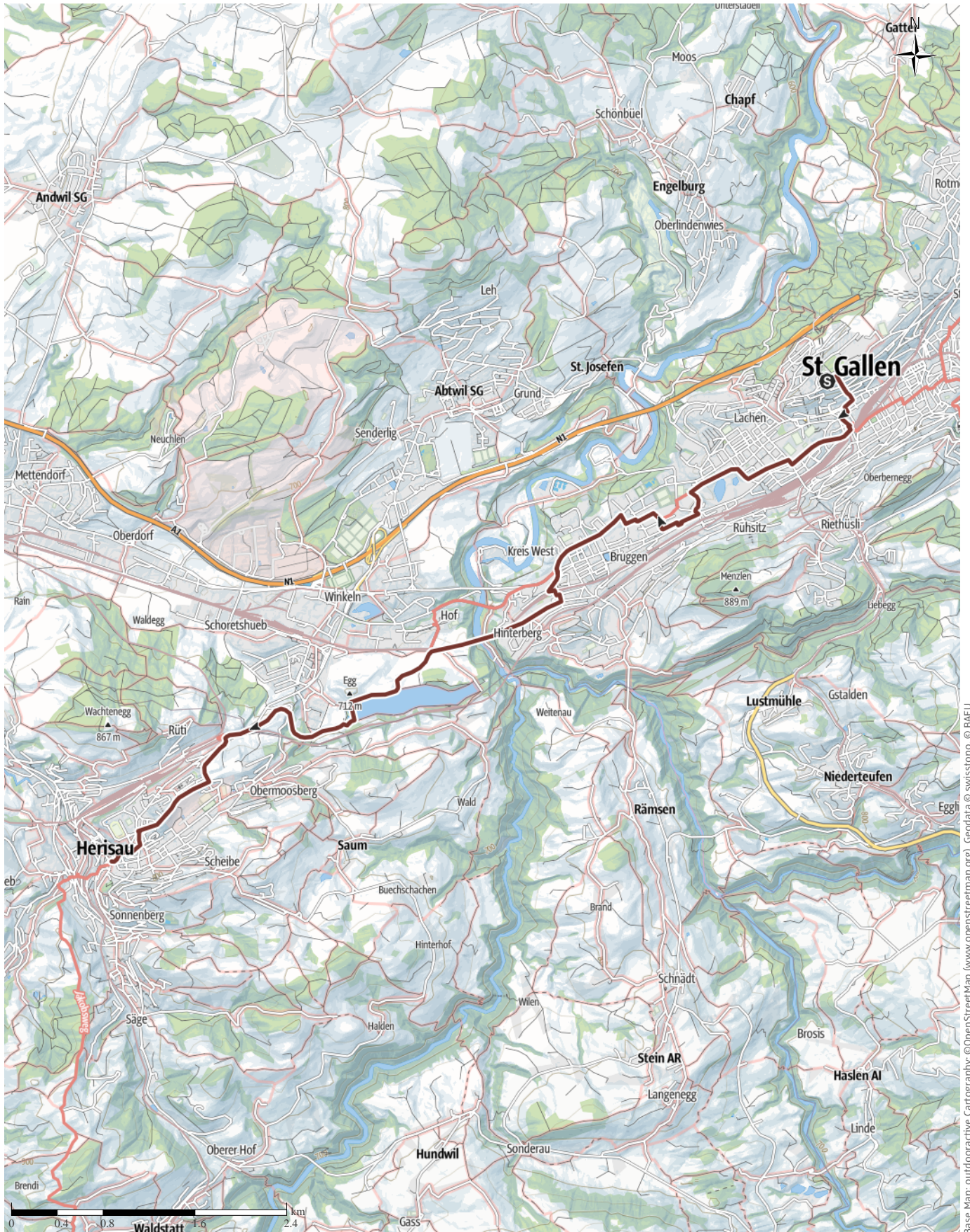


# R02 Way of St. James (Camino) from St. Gallen to Herisau

↔ 10.4km | ⌚ 3:06h | ▲ 265m | ▼ 220m | Difficulty -

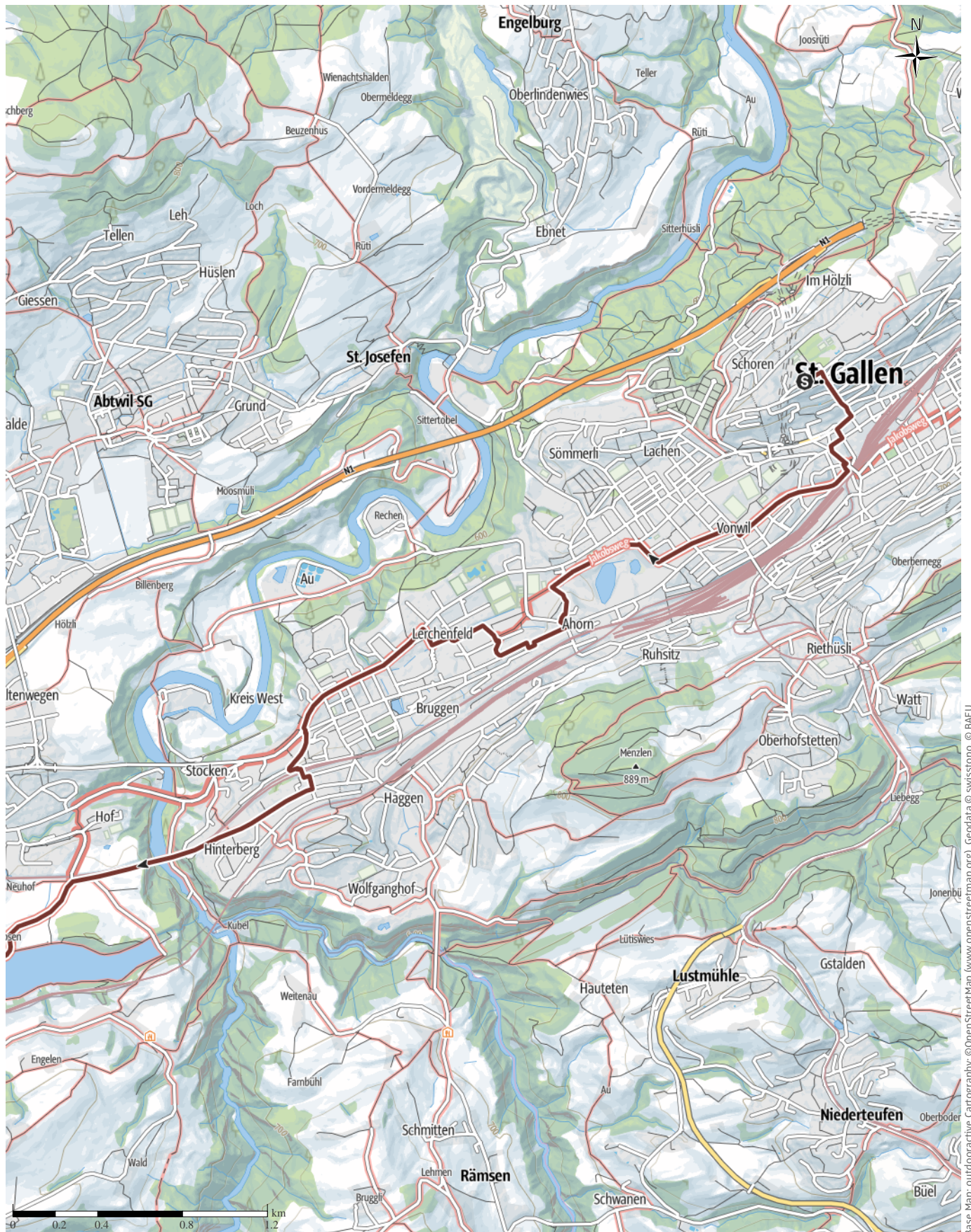


Base Map: outdooractive Cartography. © OpenStreetMap (www.openstreetmap.org) Geodata © swisstopo, © BAFU



# R02 Way of St. James (Camino) from St. Gallen to ...

↔ 10.4km | ⌚ 3:06h | 🏔️ 265m | 📉 220m | Difficulty -



Base Map: outdooractive Cartography; ©OpenStreetMap (www.openstreetmap.org) Geodata © swisstopo, © BAFU



# R02 Way of St. James (Camino) from St. Gallen to ...

↔ 10.4km

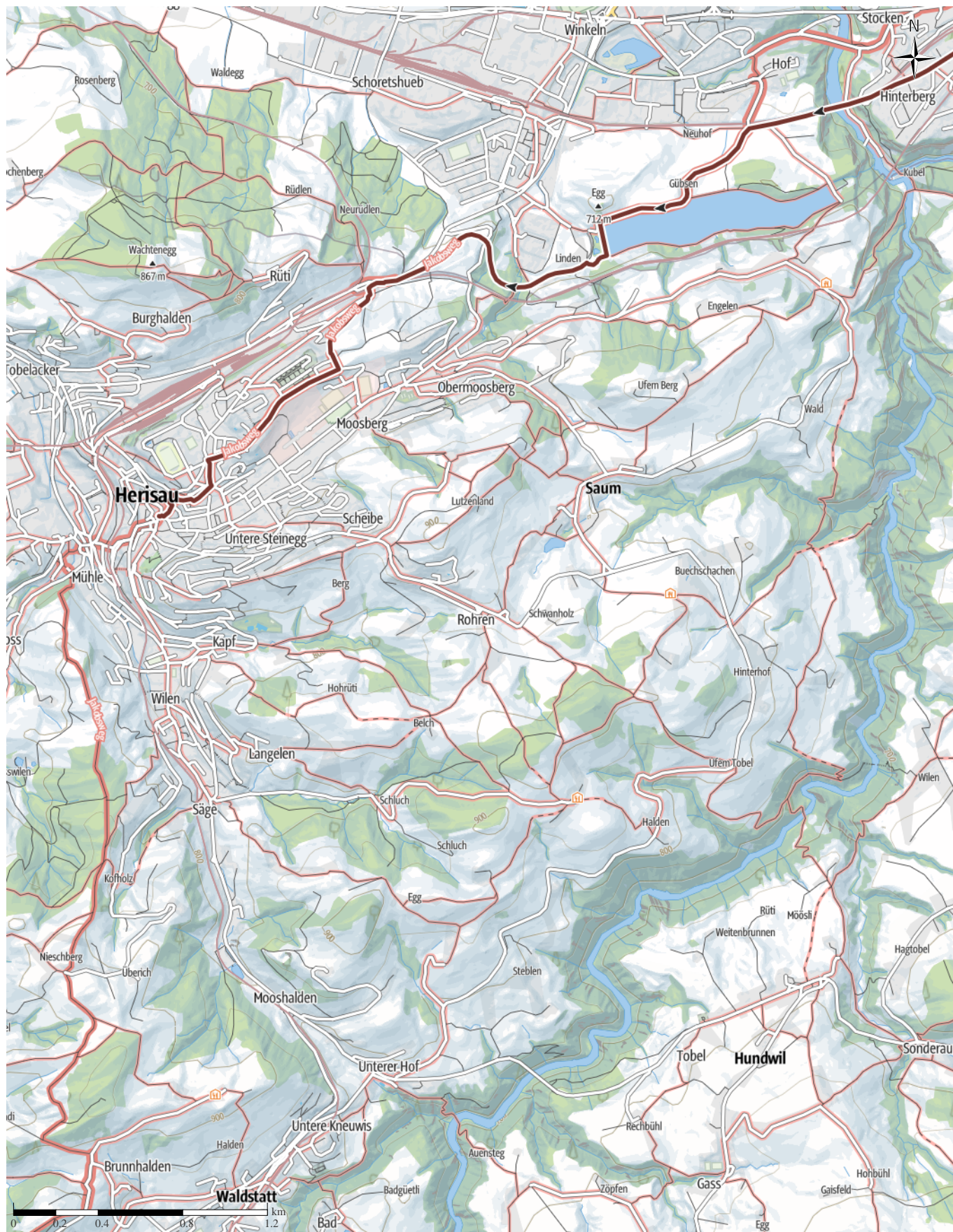
🕒 3:06h

⬆️ 265m

⬆️ 220m

Difficulty

-



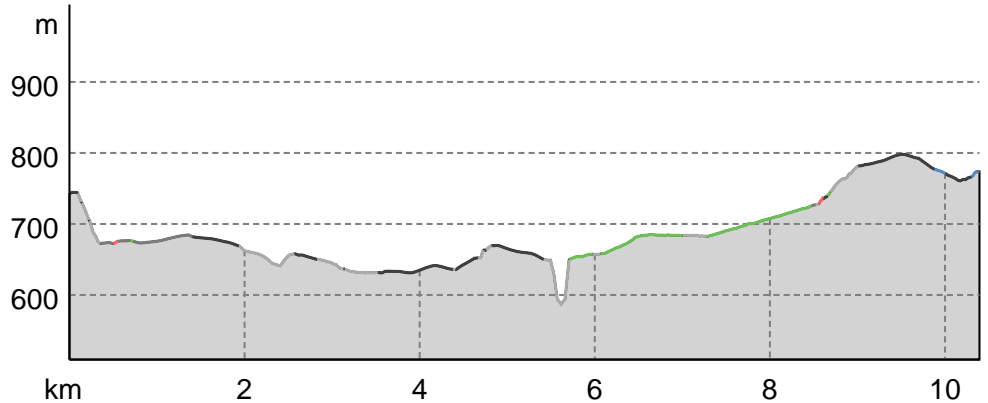
Base Map: outdooractive Cartography; ©OpenStreetMap (www.openstreetmap.org); Geodata © swisstopo, © BAFU

# R02 Way of St. James (Camino) from St. Gallen to ...

## Road surface

Asphalt	1km
Dirt road	0.2km
Way	2.5km
Path	0.1km
Street	3.8km
Unknown	2.8km

## Elevation profile



## route data

### Pilgrim Walks

Distance	↔	10.4 km
Duration	🕒	3:06 h
Ascent	⬆️	265 m
Descent	⬇️	220 m

Difficulty: -

Stamina: ●●●●●

Technique: ●●●●●

Altitude: 798 m / 611 m

## Best time of year

JAN | FEB | MAR  
 APR | MAY | JUN  
 JUL | AUG | SEP  
 OCT | NOV | DEC

## Ratings

Authors: ●●●●●

Experience: ●●●●●

Landscape: ●●●●●

Community: ●●●●●

## More route data



Angus Carrick

Updated: January 04, 2020

Way of St. James / Jakobsweg / Camino: A short walk in freezing fog from St. Gallen to Herisau.

For more photos see our website:  
<https://www.carrick.ch/jakobsweg>

On 1st January 2020, we arrived in St.Gallen to even thicker fog than the previous day! The first church that we passed was one that has been closed since '80s, which, seemingly no-one knows what to do with. The way out of St.Gallen was not very interesting but we did find two churches open in Bruggen both very warm and both very well decorated. We passed an old drying tower and tried to imagine how it actually worked as

we also read that they died cloth red. Next to this was a chapel that was named after St. James in the past but is now called Mary of Einsedeln which houses a replica of the statue of Mary in Einseidln but which is only open on Sunday afternoons. We passed an old customs house before another high bridge. We welcomed the relief from hard surfaces as we walked through the recreational are around the GÜbsensee where, despite thick fog, we passed several people walking or jogging. We stopped for lunch but not for long as it was very cold (-2°). We began a climb through meadows and passed from canton St. Gallen into Appenzell Ausserrhoden (exterior, as opposed to AI- interior). Reaching the highest point of this stage (798 Mts) we should have had a view... Arriving in the old town, we found ourselves in Herisau and now look forward to returning to this lovely looking town to (hopefully) see it's beauty in sunnier days! We did visit two churches and all the people we passed said 'hello' or exchanged

## R02 Way of St. James (Camino) from St. Gallen to ...

a few words.

### Takeaway route for iPhone and Android



Scan QR code, save this route offline, share with friends and more...

Website

<https://out.ac/emVAg>