

# G18 Way of St. James (Camino) Trun to Disentis

← 15.6km | ⌚ 4:54h | ▲ 473m | ▼ 163m | Difficulty -



Base Map: outdooractive Cartography; ©OpenStreetMap (www.openstreetmap.org) Geodata © swisstopo, © BAFU

# G18 Way of St. James (Camino) Trun to Disentis

↔ 15.6km

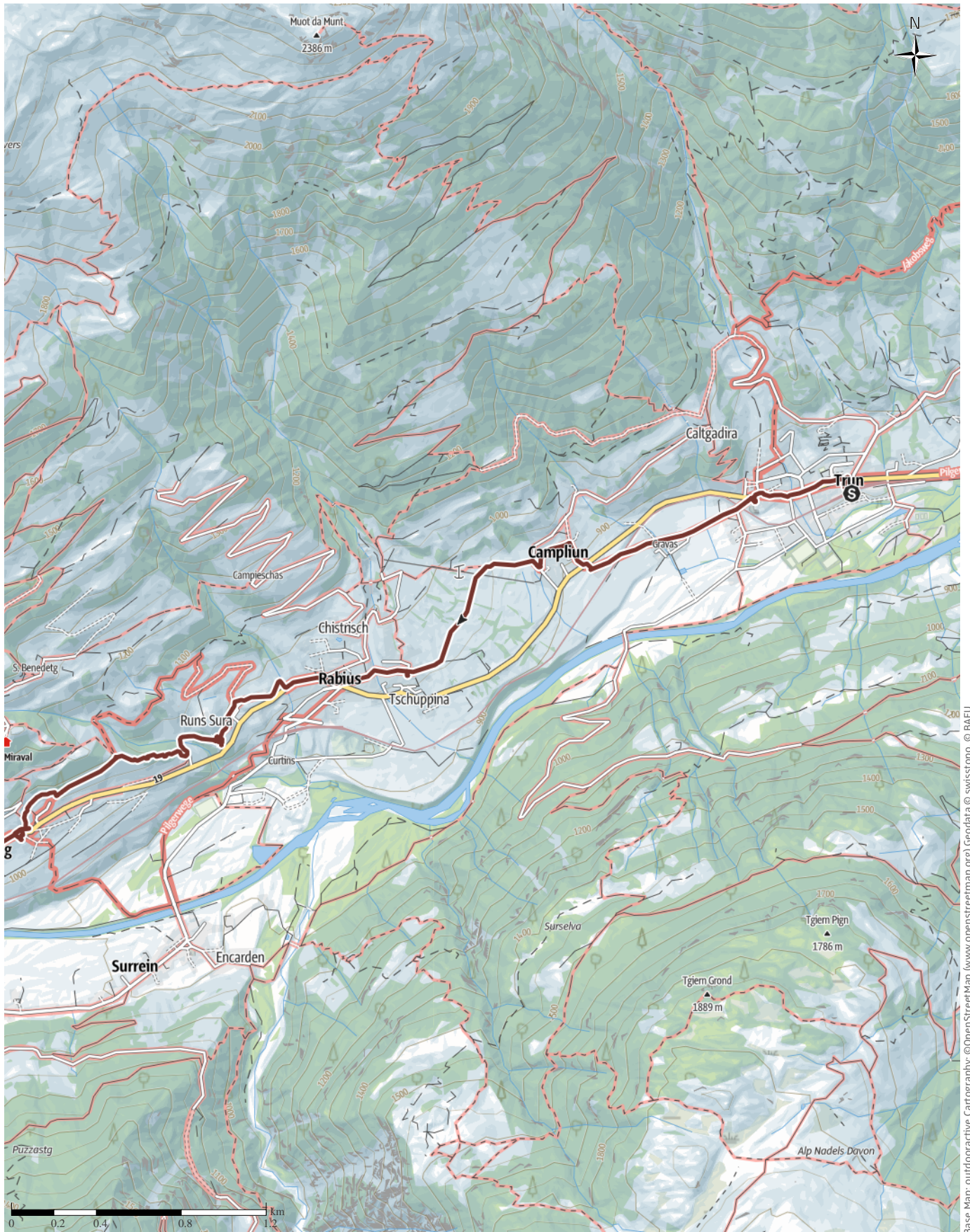
🕒 4:54h

⬆️ 473m

⬆️ 163m

Difficulty

-



Base Map: outdooractive Cartography; ©OpenStreetMap (www.openstreetmap.org) Geodata © swisstopo, © BAFU

# G18 Way of St. James (Camino) Trun to Disentis

↔ 15.6km

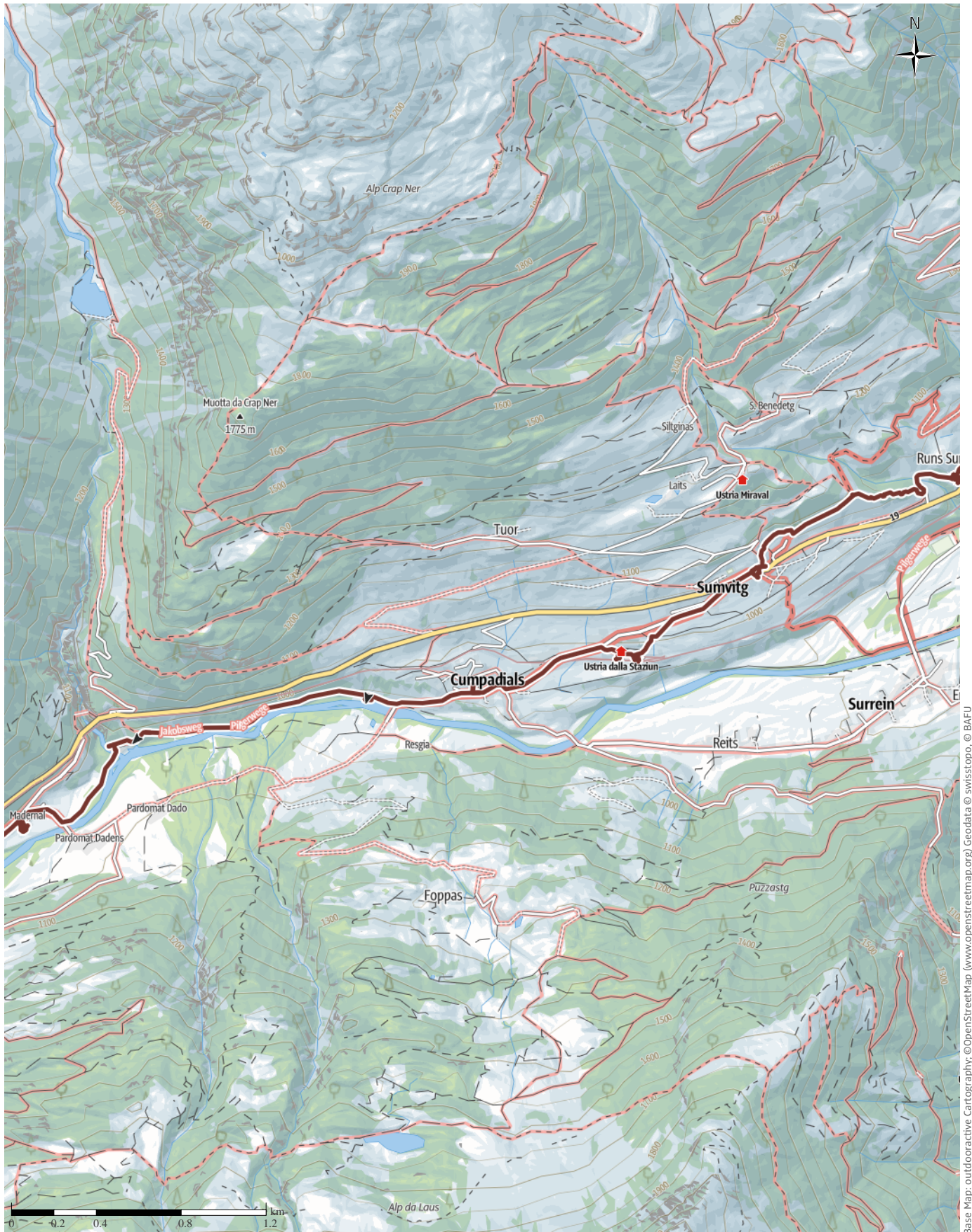
🕒 4:54h

⬆️ 473m

⬆️ 163m

Difficulty

-



Base Map: outdooractive Cartography; ©OpenStreetMap (www.openstreetmap.org) Geodata © swisstopo, © BAFU

# G18 Way of St. James (Camino) Trun to Disentis

↔ 15.6km

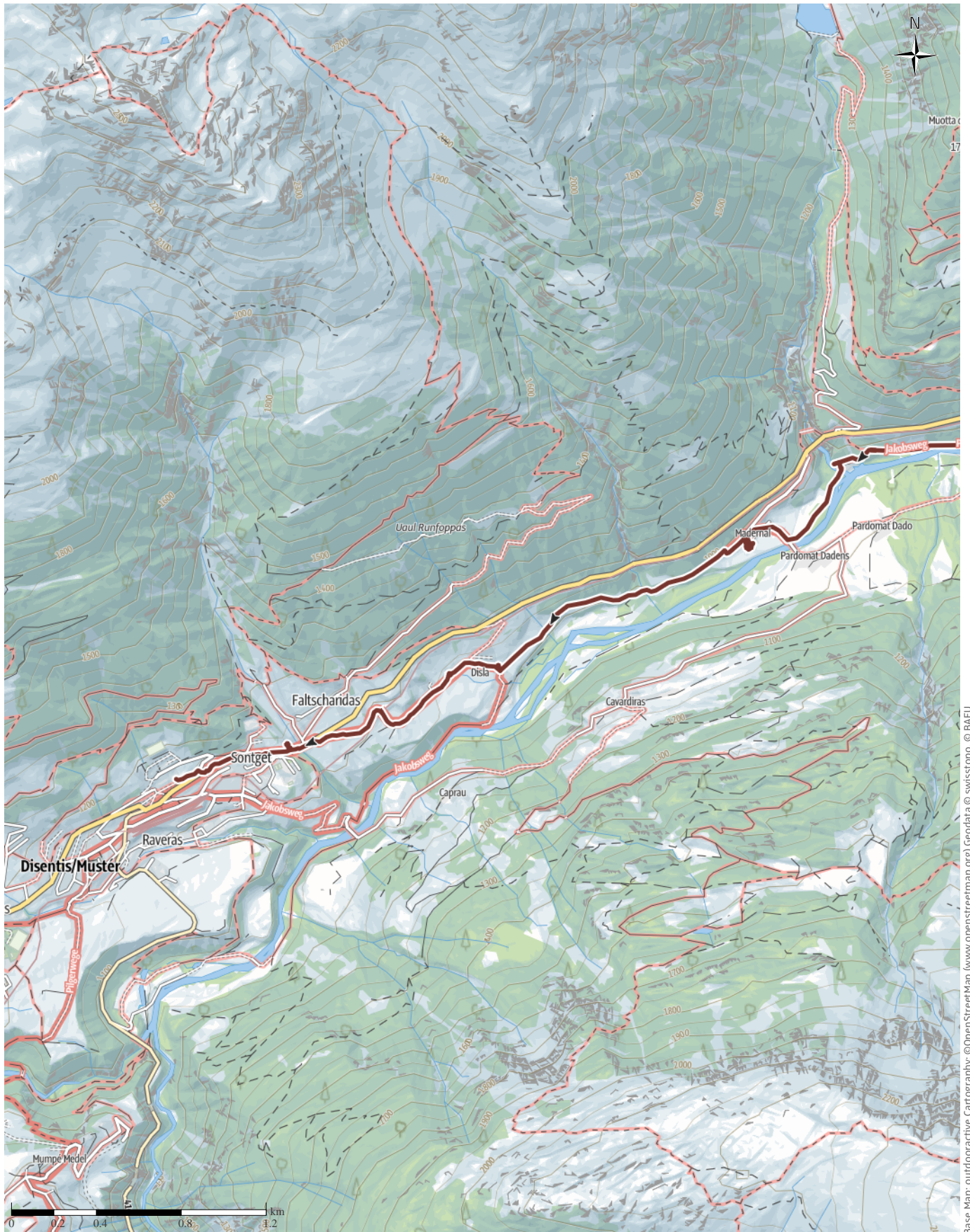
🕒 4:54h

⬆️ 473m

⬆️ 163m

Difficulty

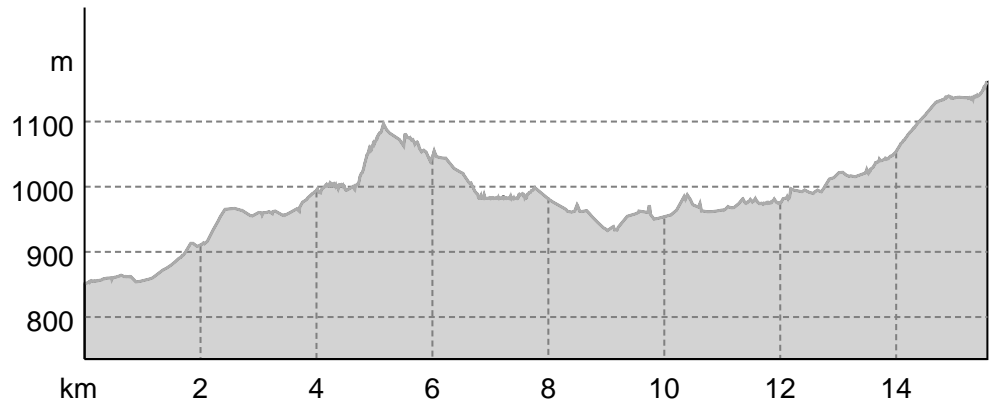
-



Base Map: outdooractive Cartography; ©OpenStreetMap (www.openstreetmap.org) Geodata © swisstopo, © BAFU

# G18 Way of St. James (Camino) Trun to Disentis

## Elevation profile



### route data

#### Pilgrim Walk

Distance ↔ 15.6 km

Duration ⌚ 4:54 h

Ascent ▲ 473 m

Descent ▼ 163 m

Difficulty -

Stamina ●●●●●●

Technique ●●●●●●

Altitude

1,160 m

850 m

### Best time of year

JAN | FEB | MAR  
 APR | MAY | JUN  
 JUL | AUG | SEP  
 OCT | NOV | DEC

### Ratings

Authors ●●●●●●

Experience ●●●●●●

Landscape ●●●●●●

Community

### More route data



Angus Carrick

Updated: January 31, 2021

From the founding tree of Graubunden in the rain to a Monastery in the snow.

We returned to Trun by train, still in the rain, and looked at the fresco illustrating the founding of the Grau Bund in 1424 under tree. From there we trudged through the rain, following the wooded banks of the river. The torrential rain gradually changed to snow, and at one point we rested in a small chapel in a field to warm ourselves up! We finally reached Disentis in the snow, past the the ninth waysign, and on to the monastery that was our goal for that section of the journey. After a brief look around, we headed for the train station and the warmth of our base in Ilanz. The next day we would return to Disentis monastery to collect a certificate to commemorate this section of the jakobsweg!

More photos on our website, [jakobsweg.carrick.ch](http://jakobsweg.carrick.ch)

### Protected areas 🌿

- Regional inventory Heckenlandschaft Pervenda
- Regional inventory Disla - Pardomat
- Regional inventory Prauet
- Regional inventory Flusslandschaft des Vorderrheins von Sedrun bis Sumvitg
- Federal landscape inventory Prauet
- Federal landscape inventory Disla-Pardomat

The following rules may apply in protected areas:

Please note the local information on nature conservation.

### Takeaway route for iPhone and Android



Scan QR code, save this route offline, share with friends and more...

Website

<https://out.ac/yNNA4>

## G18 Way of St. James (Camino) Trun to Disentis

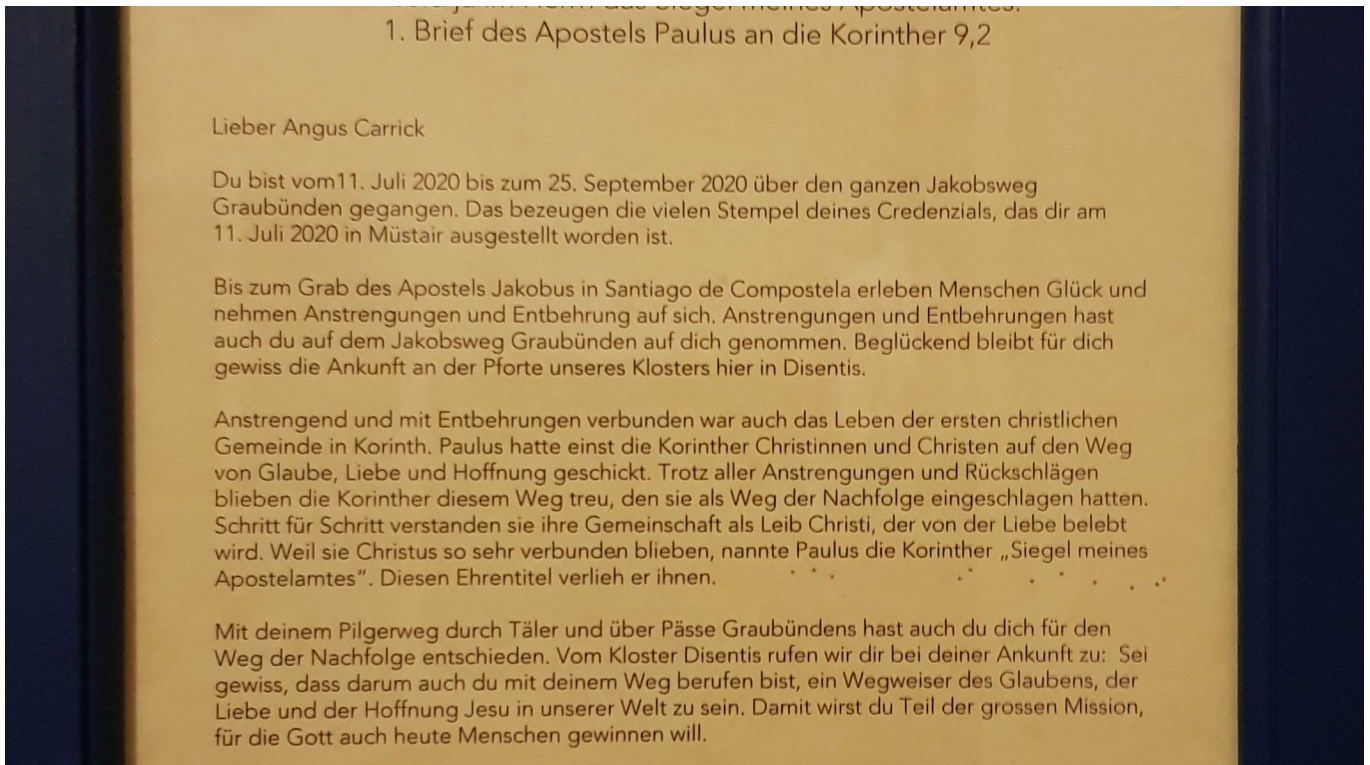


Photo: Angus Carrick, Community



Photo: Angus Carrick, Community