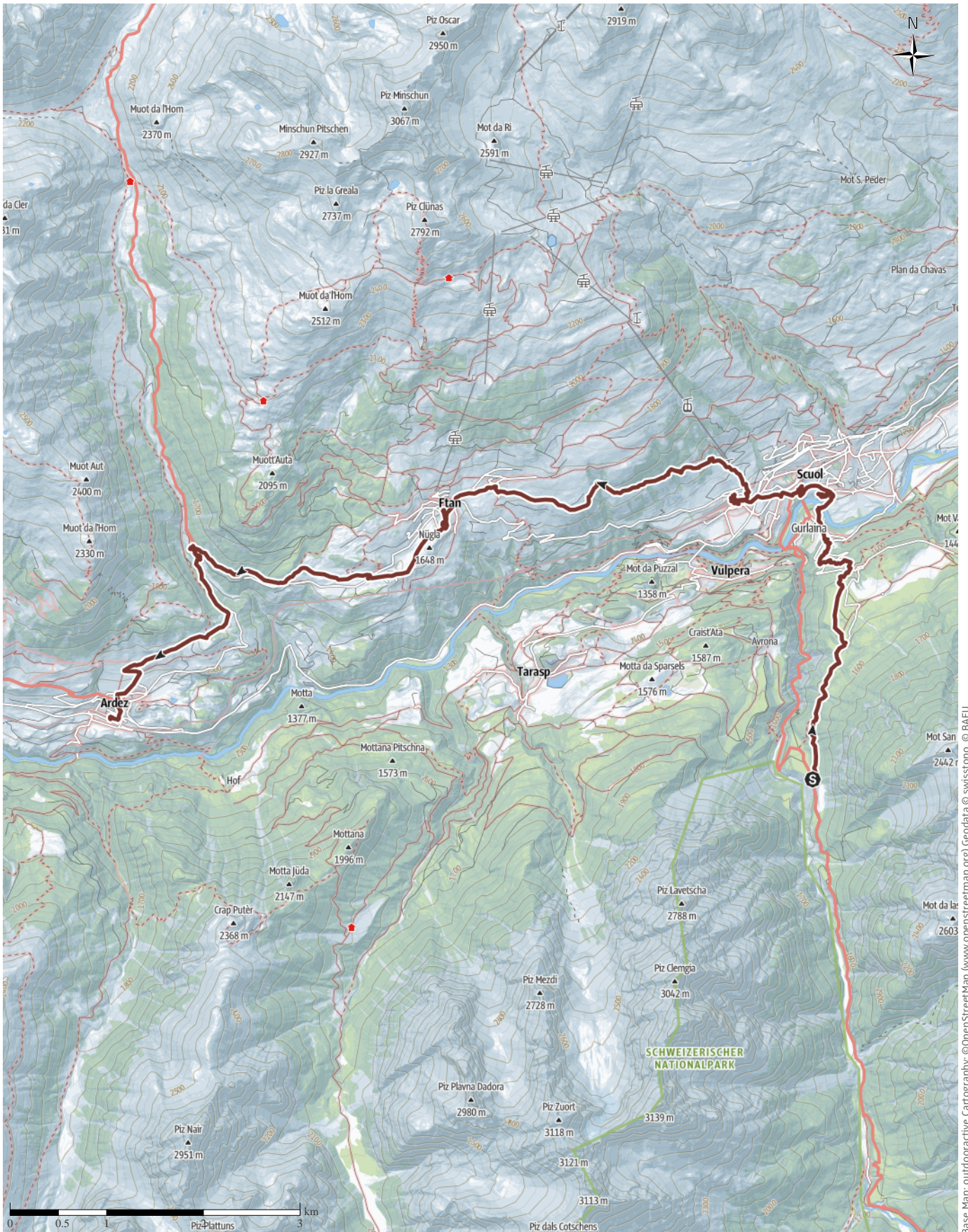


Pilgrim Walk G03 Way of St. James (Camino) S-Charl to Ardez

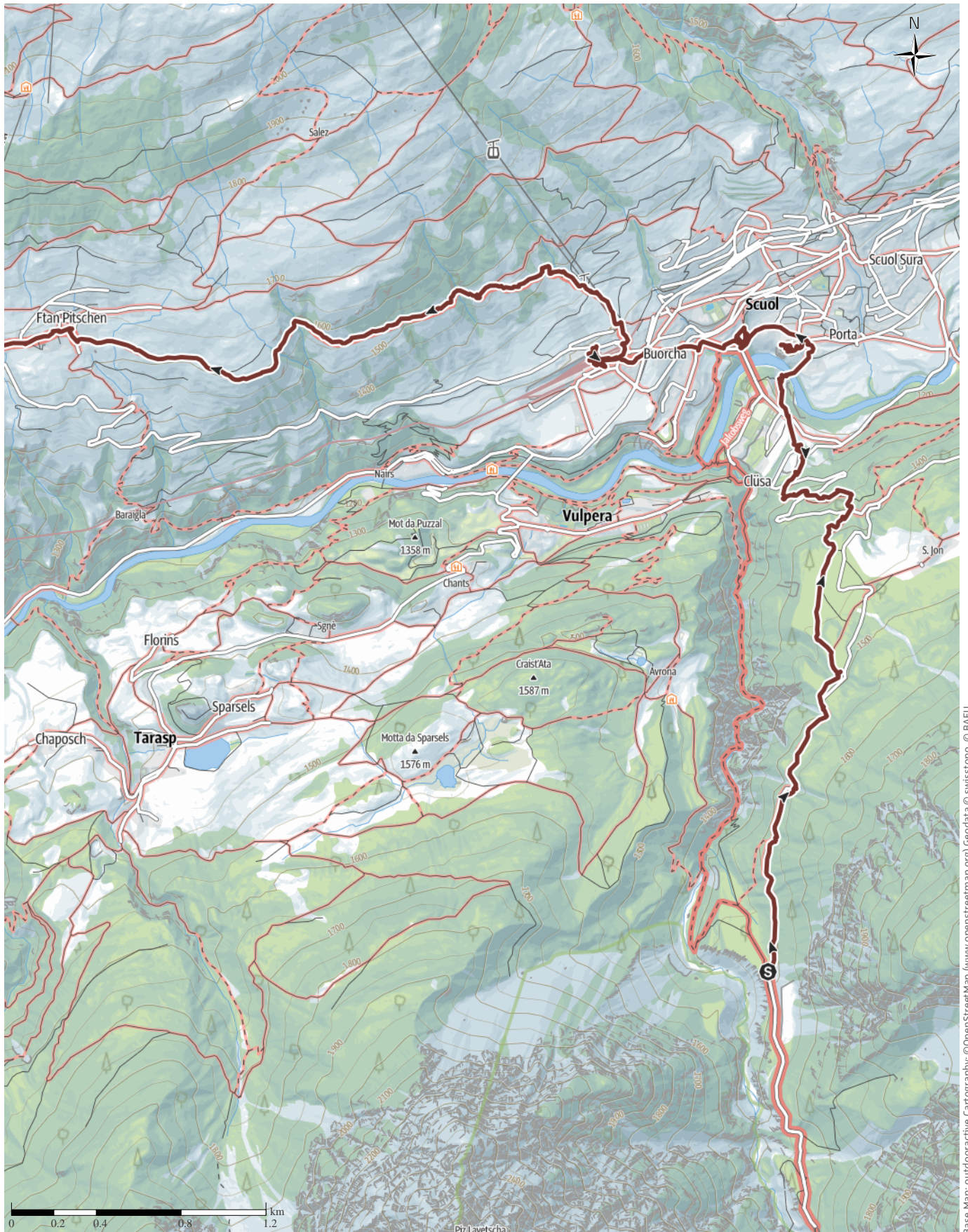
Protected areas  ! Please note nature reserve information!



Base Map: outdooractive Cartography, ©OpenStreetMap (www.openstreetmap.org) Geodata © swisstopo, © BAFU

Pilgrim Walk G03 Way of St. James (Camino) S ...

← 19.6km | ⌚ 6:42h | ▲ 635m | ▼ 693m | Difficulty -



Base Map: outdooractive Cartography; ©OpenStreetMap (www.openstreetmap.org) Geodata © swisstopo, © BAFU

Pilgrim Walk G03 Way of St. James (Camino) S ...

↔ 19.6km

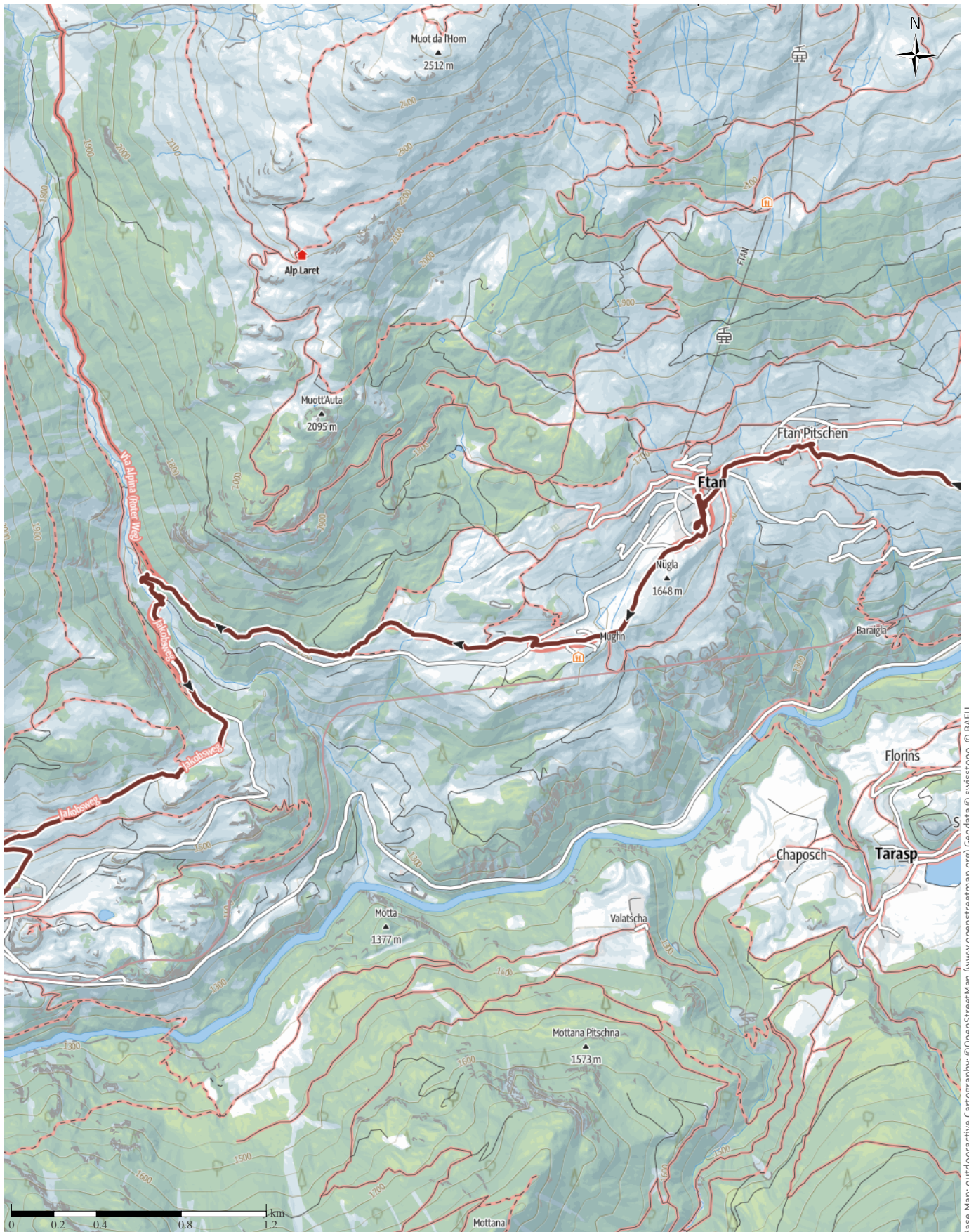
🕒 6:42h

⬆️ 635m

⬆️ 693m

Difficulty

-



Pilgrim Walk G03 Way of St. James (Camino) S ...

↔ 19.6km

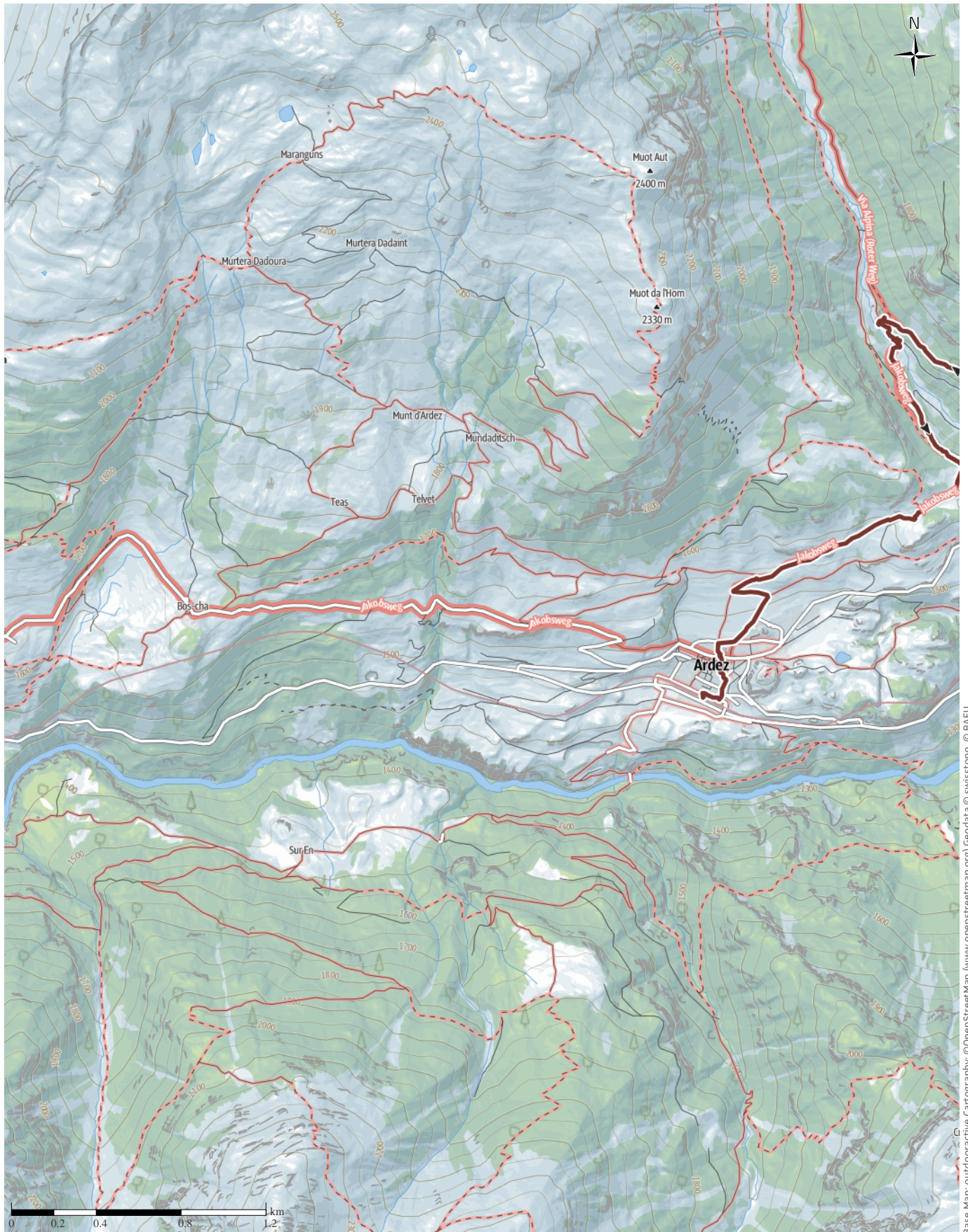
🕒 6:42h

▲ 635m

▼ 693m

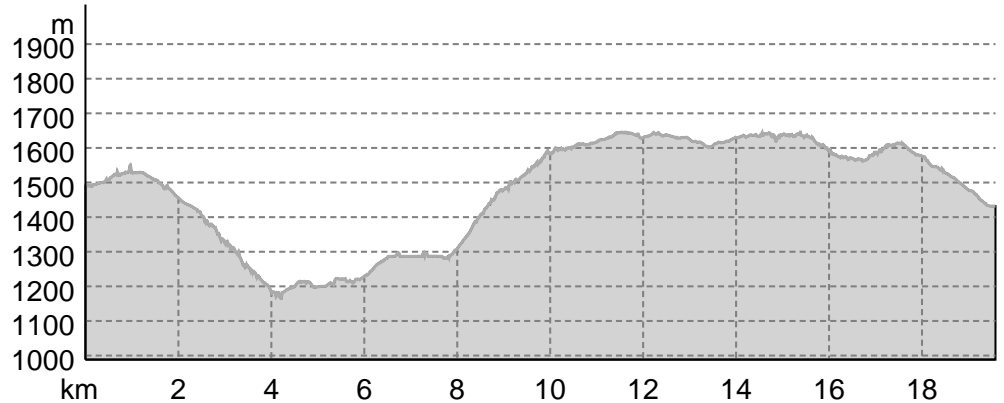
Difficulty

-



Pilgrim Walk G03 Way of St. James (Camino) S ...

Elevation profile



route data

Pilgrim Walk

Distance ↔ 19.6 km

Duration ⌚ 6:42 h

Ascent ▲ 635 m

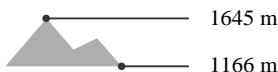
Descent ▼ 693 m

Difficulty -

Stamina ●●●●●●

Technique ●●●●●●

Altitude



Best time of year

JAN | FEB | MAR
 APR | MAY | JUN
 JUL | AUG | SEP
 OCT | NOV | DEC

Ratings

Authors

Experience ●●●●●●

Landscape ●●●●●●

Community

More route data



Angus Carrick

Updated: August 22, 2020

From a bus-stop on the road from S-Charl, discovered the gorge was closed, but found way through Scuol to Ardez. Magnificent panoramas!

We took the post bus back towards S-Charl, getting off the stop before the one we got on the day before. Unfortunately gorge was closed, so we had to walk down the road a bit before finding a pleasant path through the woods down to Scuol. We visited both churches in Scuol, and had a pleasant chat with the Catholic priest whilst getting a pilgrim stamp. From there, we walked along the valley to Ardez, taking in the magnificent vistas. More on our website!

Protected areas 🌿

- Regional inventory Furmièrs
- Regional inventory Val Tuoi - Val Tasna
- Regional inventory Foppas
- Regional inventory Chasellas - Ruanditsch
- Regional inventory Clemgiaschlucht
- Regional inventory Suot Duas
- Regional inventory Mot Morel
- Federal landscape inventory Furmièrs
- Federal landscape inventory Suot Duas
- Wildlife refuge God Laret

Prohibition of access
 ! December 20 - April 20
 Wildlife refuge La Tulaida / Clüs / Chanouva

Prohibition of access
 ! December 20 - April 20
 Wildlife refuge God da Rès

Prohibition of access
 ! December 20 - April 20
 Wildlife refuge God San Jon

Pilgrim Walk G03 Way of St. James (Camino) S ...

Prohibition of access

! December 20 - April 20

The following rules may apply in protected areas:

Please note the local information on nature conservation.

Takeaway route for iPhone and Android



Scan QR code, save this route offline, share with friends and more...

Website

<https://out.ac/uU9qn>

Pilgrim Walk G03 Way of St. James (Camino) S ...



Photo: Angus Carrick, Community