

F022 Way of St. James (Camino) Fay-Monistrol

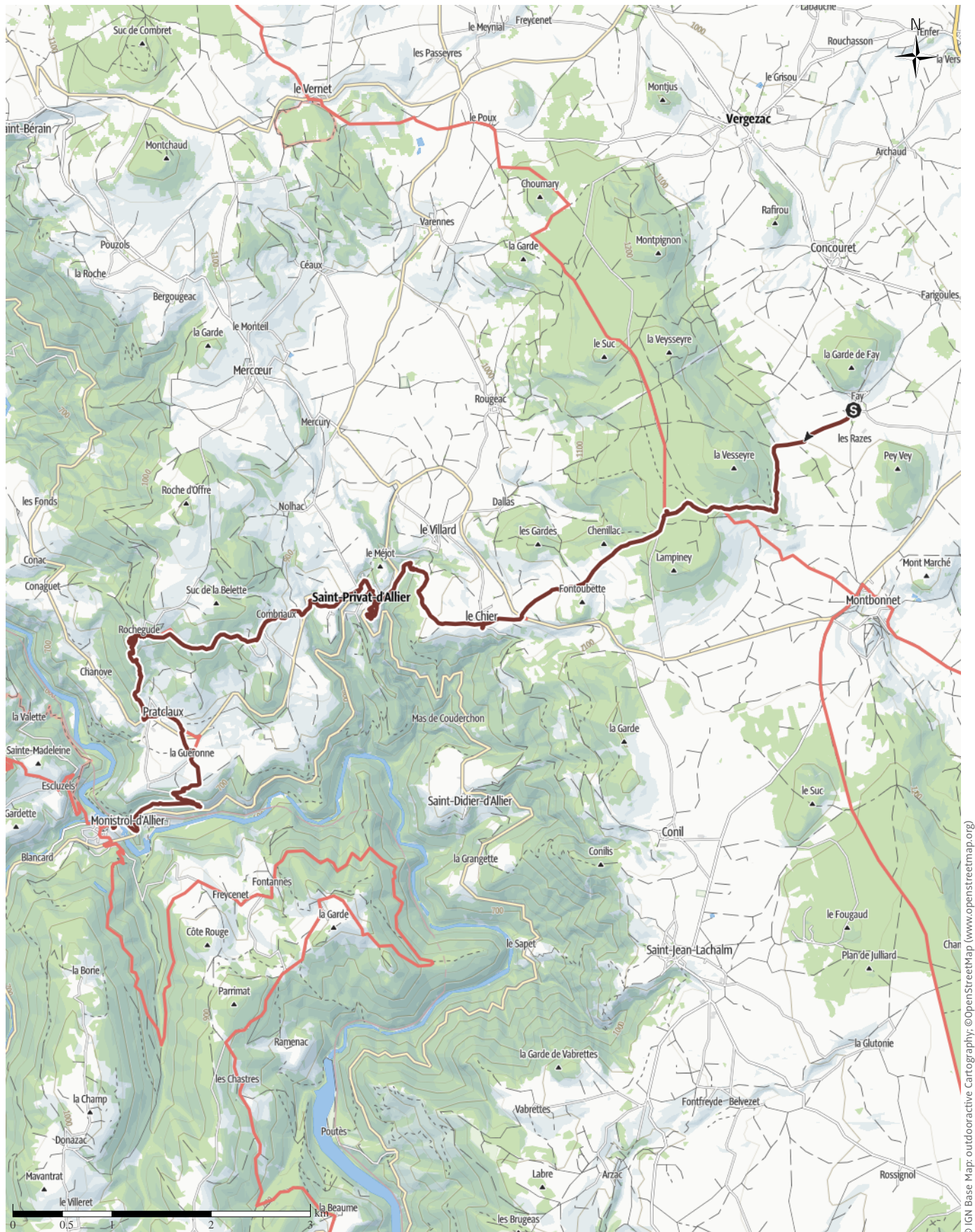
↔ 17.7 km

🕒 5:41 h

⬆️ 271 m

⬆️ 759 m

Difficulty -



© IGN Base Map: outdooractive Cartography, ©OpenStreetMap (www.openstreetmap.org)

F022 Way of St. James (Camino) Fay-Monistrol

↔ 17.7 km

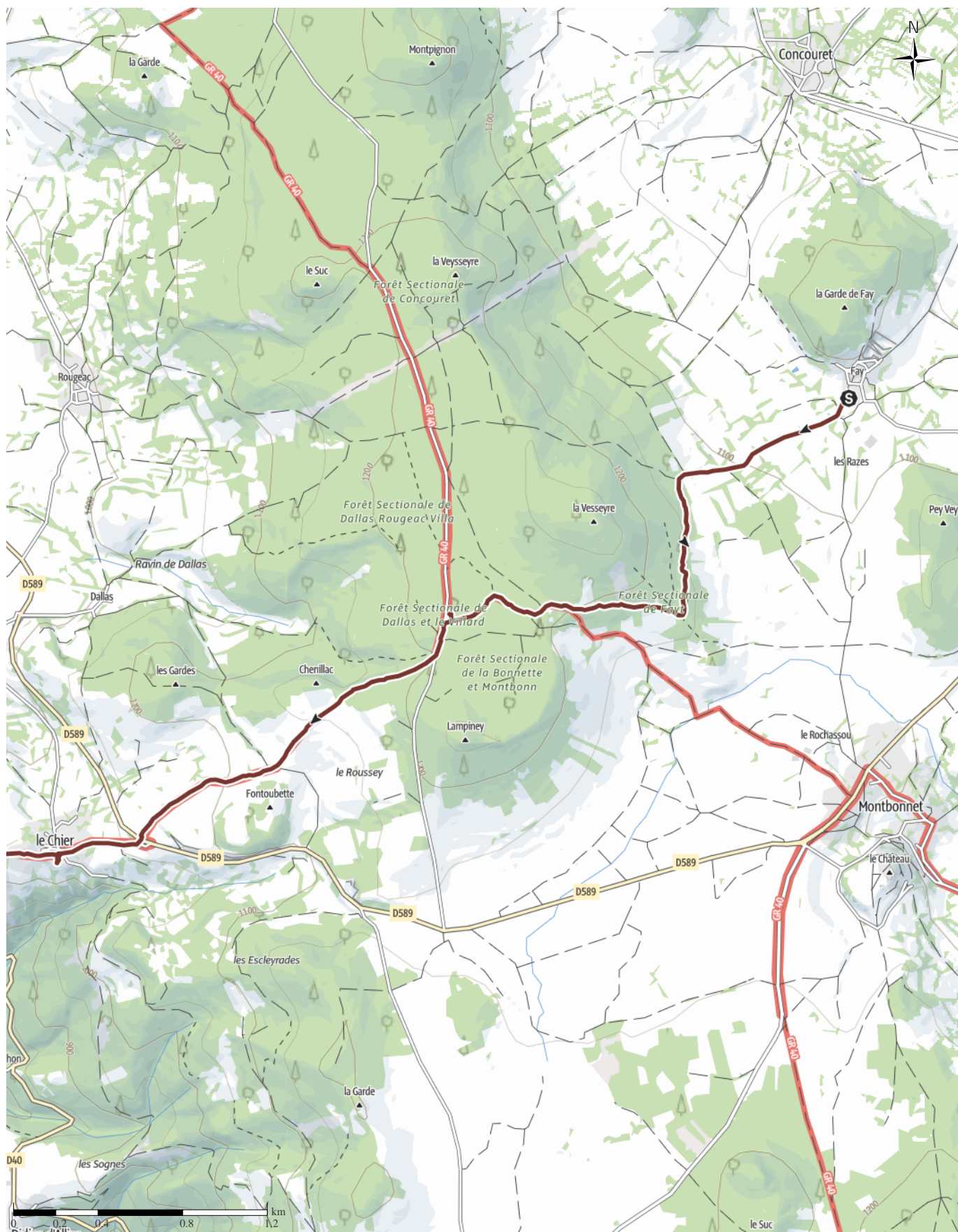
🕒 5:41 h

⬆️ 271 m

⬆️ 759 m

Difficulty

-



F022 Way of St. James (Camino) Fay-Monistrol

↔ 17.7 km

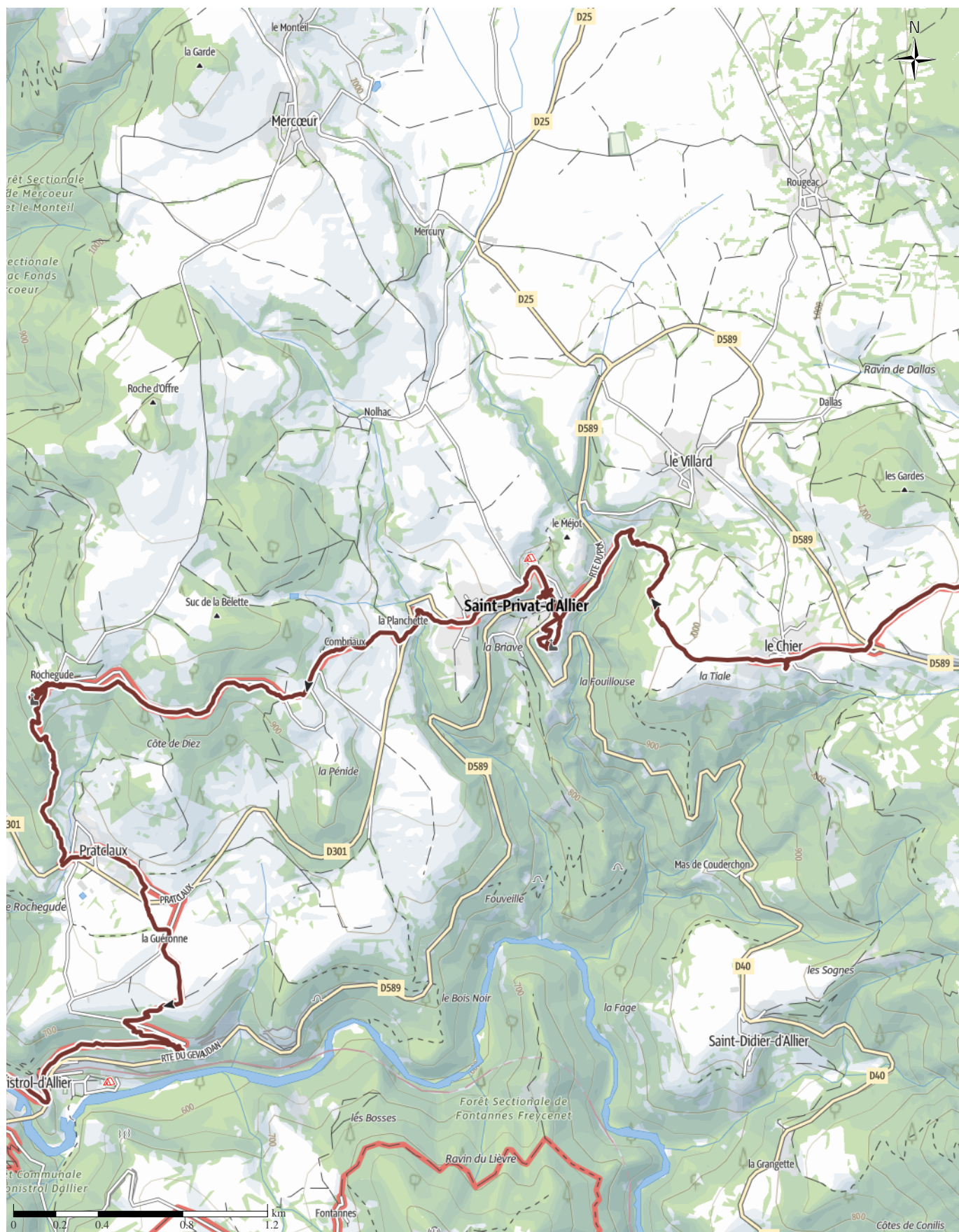
🕒 5:41 h

⬆️ 271 m

⬆️ 759 m

Difficulty

-



F022 Way of St. James (Camino) Fay-Monistrol

↔ 17.7 km

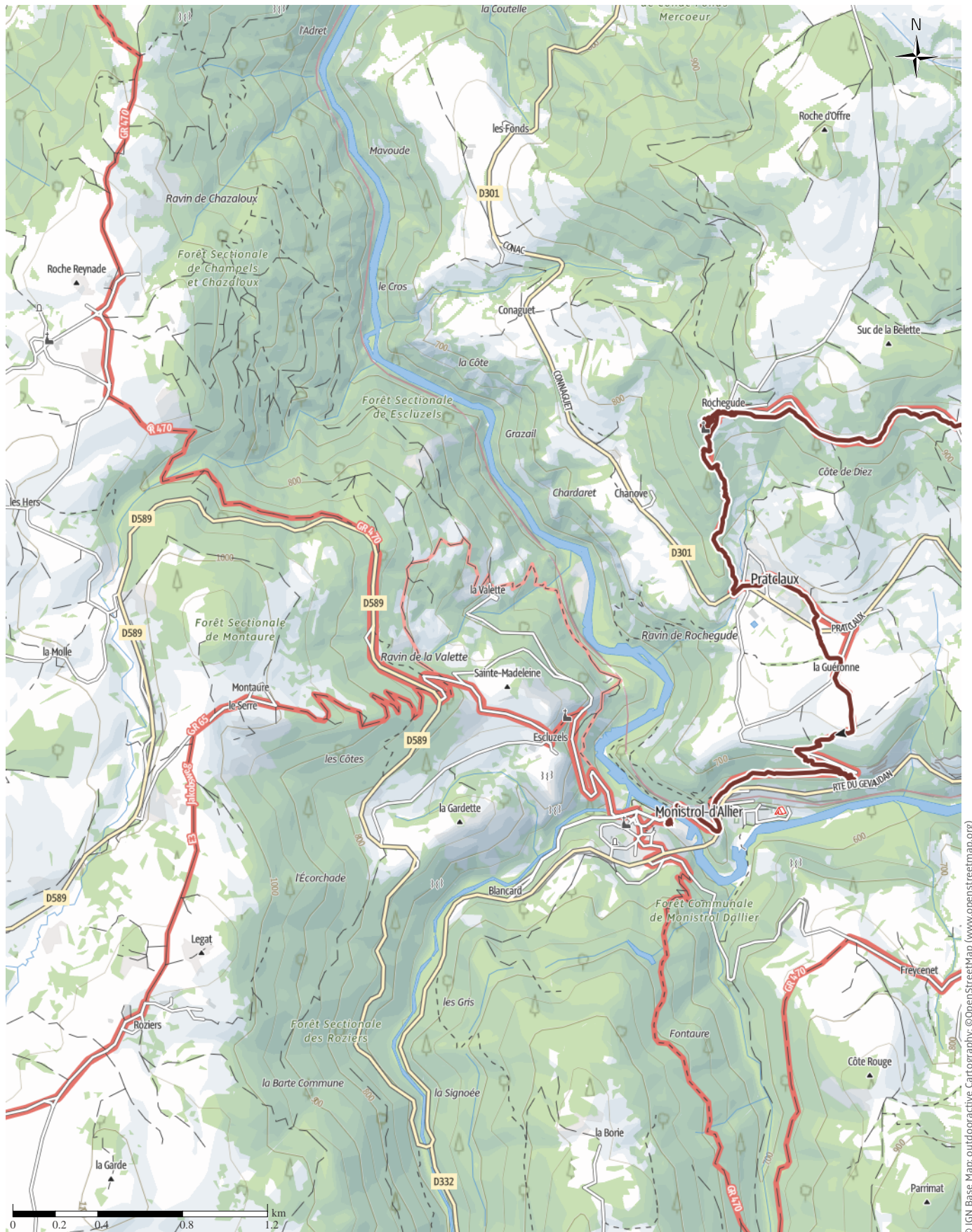
⌚ 5:41 h

▲ 271 m

▼ 759 m

Difficulty

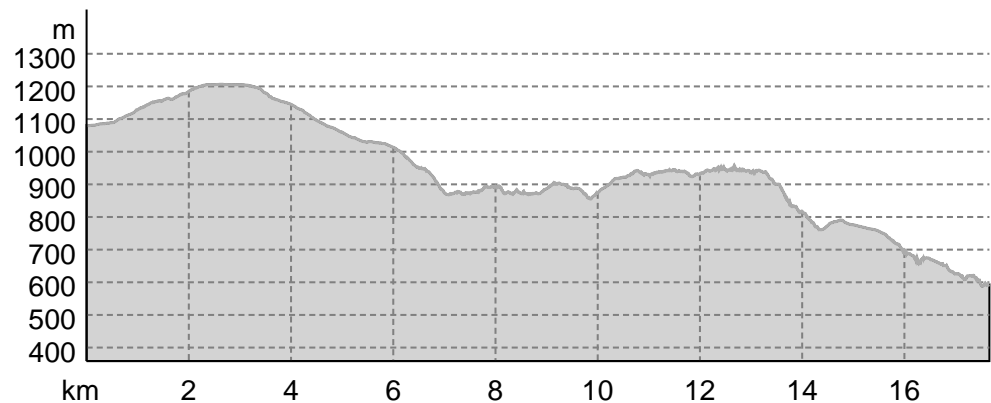
-



© IGN Base Map: outdooractive Cartography, ©OpenStreetMap (www.openstreetmap.org)

F022 Way of St. James (Camino) Fay-Monistrol

Elevation profile



route data

Pilgrim Walk

Distance ↔ 17.7 km

Duration ⌚ 5:41 h

Ascent ▲ 271 m

Descent ▼ 759 m

Difficulty

-

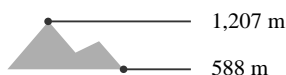
Stamina



Technique



Altitude



Best time of year

JAN | FEB | MAR
APR | MAY | JUN
JUL | AUG | SEP
OCT | NOV | DEC

Ratings

Authors

Experience



Landscape



Community

More route data



Angus Carrick

Update: December 19, 2021

Leaving Poy and heading down to the Alier river at Monistrol over rolling countryside

We set off initially downhill, but then gradually working our way down hill to the Allier river at Monistrol. The churches at St. Privat and Monistrol were well worth a visit, as was the Chapel at Rochegude. Not to mention the modern compost toilet there!

Takeaway route for iPhone and Android



Scan QR code, save this route offline, share with friends and more...

Website

<https://out.ac/IGvTft>

F022 Way of St. James (Camino) Fay-Monistrol



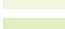

Jakobsweg: Bains-Fay to Monistrol

Photo: Angus Carrick, Community




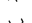











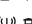
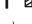
F022 Way of St. James (Camino) Fay-Monistrol

Legend

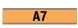
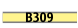
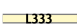
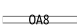




Topography

| | |
|---|---|
|  | Wood, forest |
|  | Moor, swamp, marsh |
|  | Moorland |
|  | Residential building area with single building |
|  | Industrial real estate with single building |
|  | Cemetery |
|  | Golf course |
|  | Sportsfield, stadium |
|  | Stadium |
|  | Open-air pool |
|  | Vineyard |
|  | Petrograph |
|  | Country border |
|  | State border |
|  | District border |
|  | Contour line |
|  | Special use area |
|  | Nature reserve |


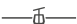








Topographic single signs

| | |
|---|--------------------|
|  | Summit cross |
|  | Elevation point |
|  | Rock |
|  | Cave |
|  | Church |
|  | Chapel |
|  | Cemetery |
|  | Palace/Castle |
|  | Abbey |
|  | Monument |
|  | Ruin |
|  | Mine |
|  | Cairn |
|  | Broadcasting tower |
|  | Windwheel |
|  | Water-/windmill |
|  | Viewpoint |

Streets and ways

| | |
|---|---------------------------------|
|  | Freeway with number |
|  | Highway with number |
|  | State, country, district street |
|  | Village road |
|  | Main agricultural road |
|  | Agricultural road |
|  | Trail |
|  | Via Ferrata |

Lifts, Railway

| | |
|---|-----------------|
|  | Ropeway lift |
|  | Gondola lift |
|  | Chairlift |
|  | Ski-, draglift |
|  | Aerial ropeways |
|  | Railway |
|  | Suburban train |
|  | Subway |
|  | Tram |
|  | Railway station |