

vf012 ViaFrancigena Monthey to St.Maurice

↔ 11.4 km

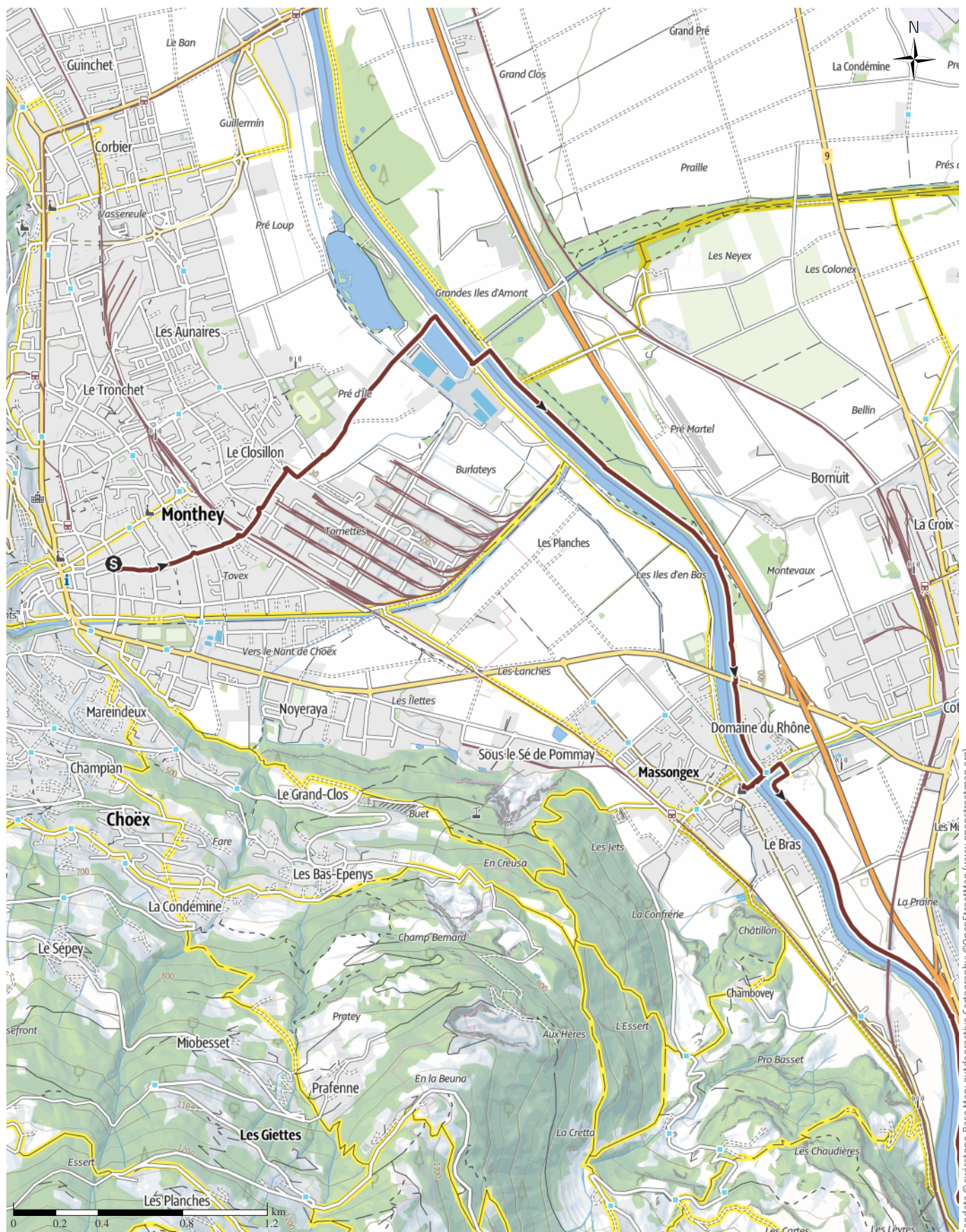
🕒 3:05 h

⬆️ 76 m

⬆️ 69 m

Difficulty

moderate



vf012 ViaFrancigena Monthey to St.Maurice

↔ 11.4 km

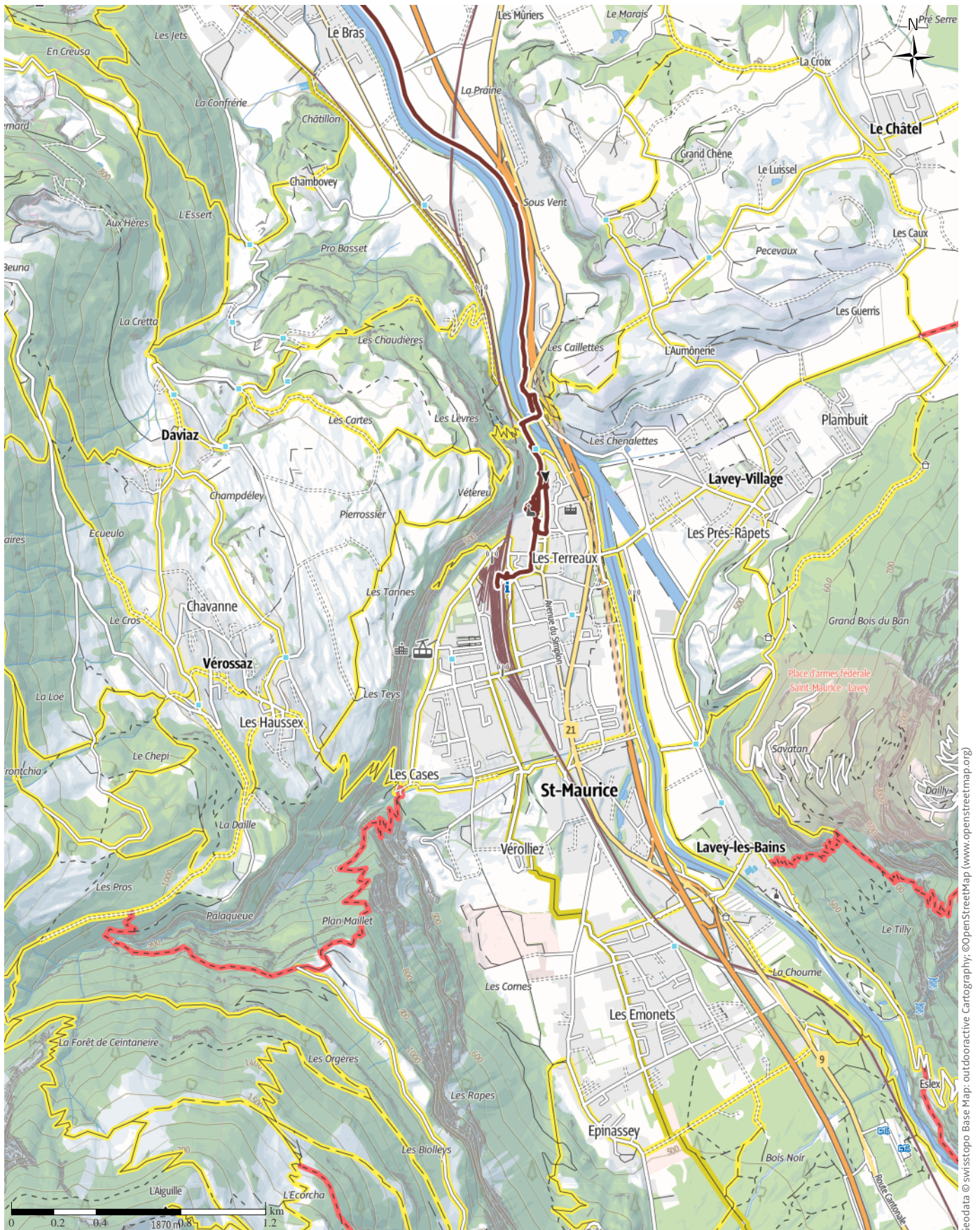
🕒 3:05 h

⬆️ 76 m

⬆️ 69 m

Difficulty

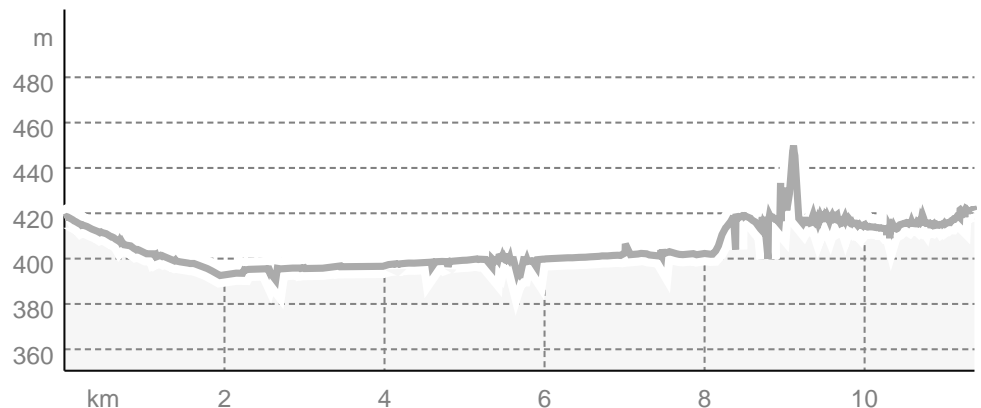
moderate



Track types

Length 11.4 km

Elevation profile



route data

Pilgrim Walk

Distance 11.4 km

Duration 3:05 h

Ascent 76 m

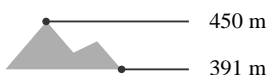
Descent 69 m

Difficulty moderate

Stamina

Technique

Altitude



Best time of year

JAN | FEB | MAR
APR | MAY | JUN
JUL | AUG | SEP
OCT | NOV | DEC

Ratings

Authors

Experience

Landscape

Community

More route data



Angus Carrick

Update: August 16, 2025

A pleasant walk along the Rhône, past the ancient celtic capital of Valais to St.Maurice

After a coffee and croissant, we walked out through the industrial area of Monthey, crossed an interesting foot bridge, and set off along the bank of the Rhône. After a pleasant walk along the river, we crossed to Massongex, the ancient capital of Celtic Valais. From there, it was not long until we saw the castle guarding the entrance to St.Maurice, and then on to arrive at the Abbey. We had been there several times before, as it is also on the Camino of St.James, so we collected a stamp for our Francigena pilgrim pass, and enjoyed the cool of the Abbey before returning to our accommodation to avoid the heat of the day. Interestingly, St. Maurice is the middle of the route from Canterbury to Rome as now right in the middle of the route. At the end of the 3rd century, a Roman officer named Maurice was executed

here for his Christian beliefs. A place of pilgrimage was then created, and the Abbey of St. Maurice was founded by Sigismund, the King of Burgundy, in 515.

For more photos and information, see [Angus&Sue's website](#)

Protected areas

Protected Area

Parc naturel régional de la Vallée du Trient

Takeaway route for iPhone and Android



Scan QR code, save this route offline, share with friends and more...

Website

<https://out.ac/IchHuX>



ABBAYE DE SAINT-MAURICE
BASILIQUE TRÉSOR SITE ARCHÉOLOGIQUE

ABBEY OF SAINT-MAURICE
BASILICA TREASURE ARCHEOLOGICAL SITE

ACCUEIL RECEPTION

Horaires d'ouverture :

D'avril à fin octobre
du mardi au vendredi de 10h à 17h30,
samedi et dimanche de 13h30 à 17h30

Novembre
du mardi au dimanche de 13h30 à 17h

Décembre
du mardi au vendredi de 13h30 à 17h
samedi et dimanche de 13h30 à 17h

Opening Hours :

From April until the end of October
from Tuesday to Friday from 10 am to 5:30 pm
from Saturday to Sunday from 1:30 am to 5:30 pm

November
from Tuesday to Sunday from 1:30 pm to 5 pm

Photo: Angus Carrick, Community

Legend

Topography

	Wood, forest
	Moor, swamp, marsh
	Heath
	Residential area with single building
	Industrial area with single building
	Cemetery
	Golf course
	Sportsfield, stadium
	Stadium
	Open-air pool
	Vineyard
	Petrograph
	Country border
	State border
	District border
	Contour line
	Special use area
	Nature reserve

Topographic signs

	Summit cross
	Elevation point
	Rock
	Cave
	Church
	Chapel
	Cemetery
	Palace/Castle
	Abbey
	Monument
	Ruin
	Mine
	Cairn
	Broadcasting tower
	Windwheel
	Water-/windmill
	Viewpoint

Road and track

	Motorway
	Highway
	Statat road
	Road
	Main agricultural road
	Agricultural road
	Trail
	Via Ferrata

Lifts and railway

	Ropeway lift
	Gondola lift
	Chairlift
	Ski-, draglift
	Aerial ropeways
	Railway
	Suburban train
	Subway
	Tram
	Railway station