

# vf010\_ViaFrancigena\_Villeneuve-Yvorne

↔ 10.7 km

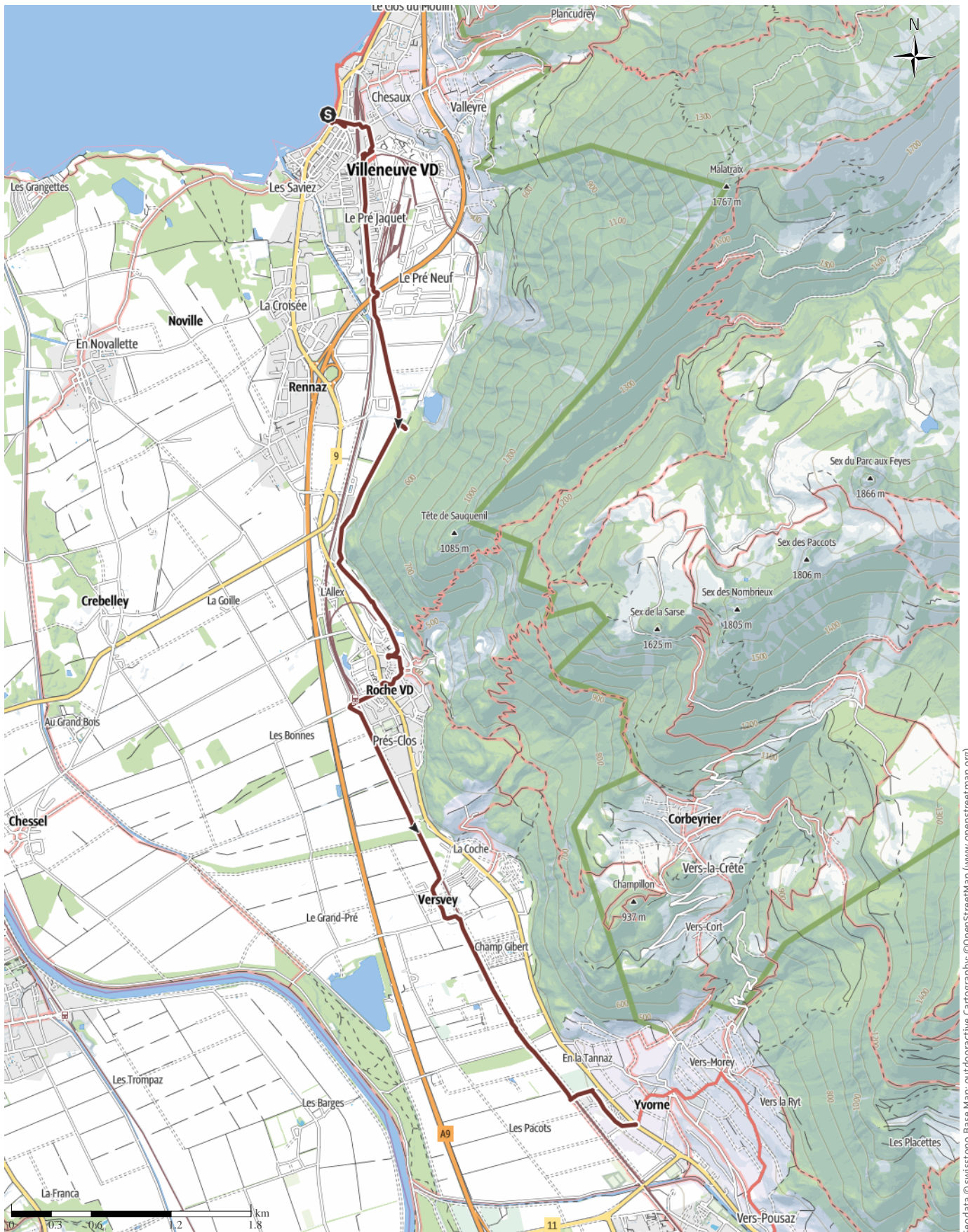
🕒 2:35 h

⬆️ 39 m

⬆️ 0 m

Difficulty

moderate





↔ 10.7 km

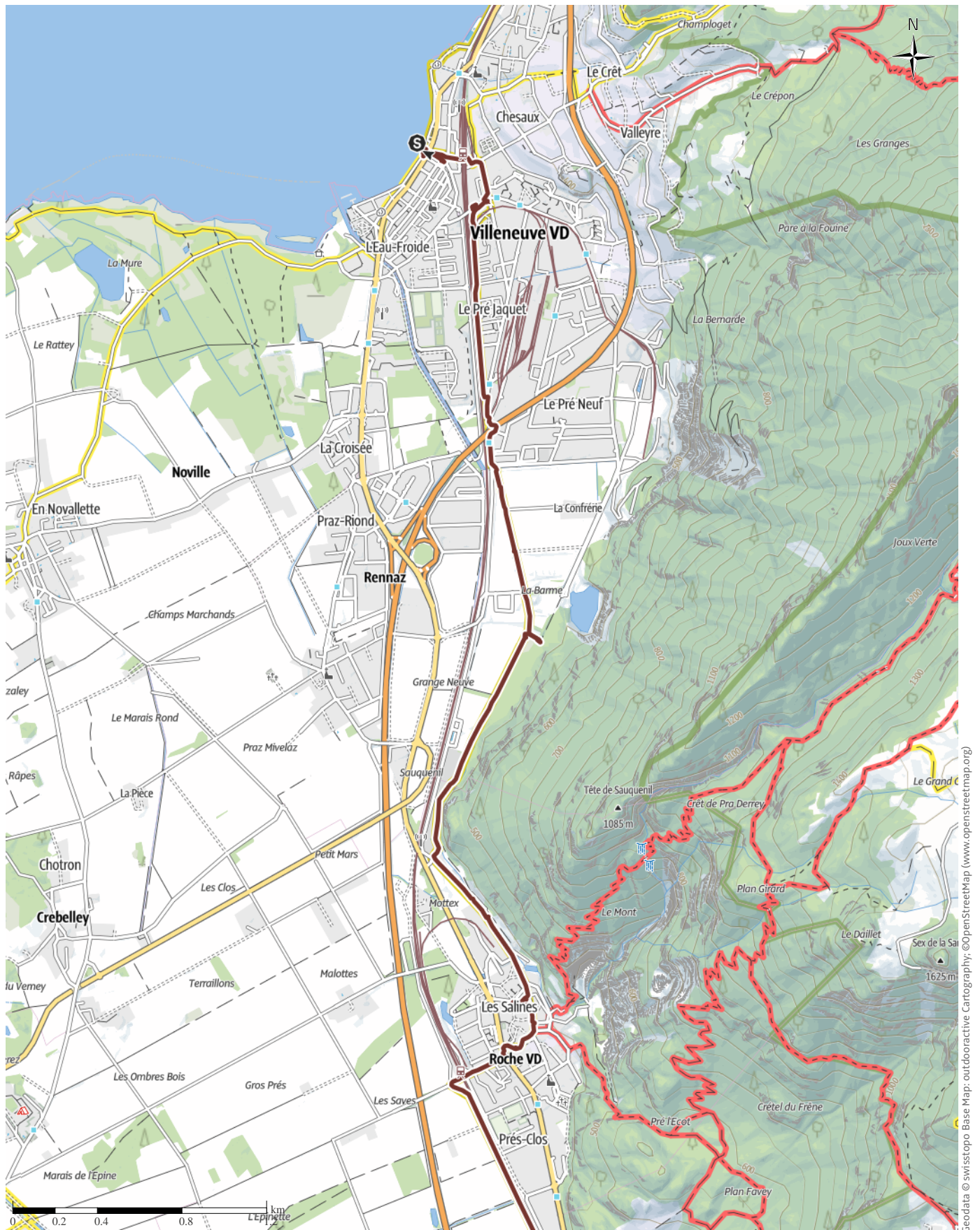
🕒 2:35 h

⬆️ 39 m

⬆️ 0 m

Difficulty

moderate





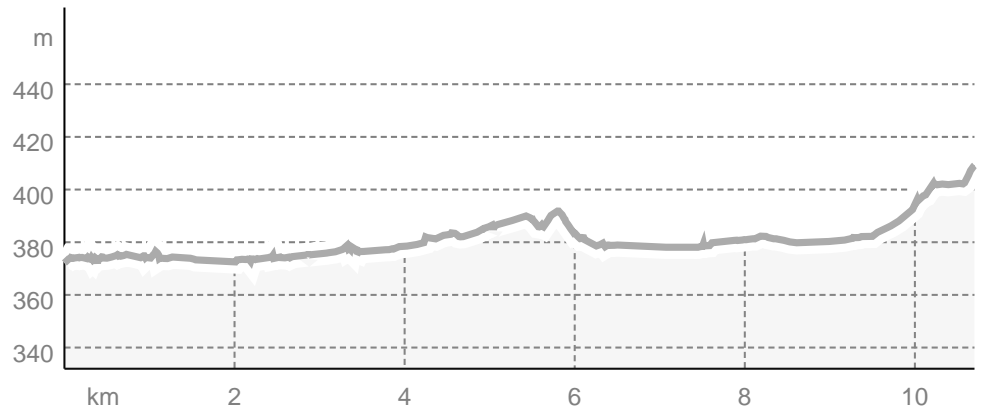
moderate



## Track types

Length 10.7 km

## Elevation profile



## route data

### Pilgrim Walk

Distance 10.7 km

Duration 2:35 h

Ascent 39 m

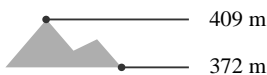
Descent 0 m

Difficulty moderate

Stamina

Technique

Altitude



## Best time of year

JAN | FEB | MAR  
APR | MAY | JUN  
JUL | AUG | SEP  
OCT | NOV | DEC

## Ratings

### Authors

Experience

Landscape

### Community

## More route data



### Angus Carrick

Update: August 12, 2025

We took the ship from Vevey to Villeneuve, and then walked to Yvorne. The route was not very interesting, mainly on tarmac next to the road or railway, and very hot

Vevey experienced its heyday in the Belle Epoque period at the end of the 19th century, and has a magnificent view across the lake Geneva towards the Alps. We collected a pilgrim stamp from the tourist office in the former market hall facing the lake front. We decided to reduce the amount of walking needed for this section by taking the ship to Villeneuve, passing Montreux and Chateau Chillon on the way. Chillon was one of many fortresses built in the 12th and 13th centuries around Leman by the Counts of Savoy, considered impregnable until in 1536 the Confederates took the castle. (You can still see the remains of the Bern coat of arms on one wall.) In the middle ages,

Villeneuve lived on the trade between Italy and Switzerland and served as a transshipment point. From there we set off through the famous Chablais wine region. The signposted route 70 was difficult to follow, appearing in some places to go round in circles for no reason, and so we used our own initiative to find the way. The day was hot, and the path uneventful, mostly on asphalt roads and close to the railway tracks. The only place of interest was Roche, where a church and hospital, founded in 1177, had once stood. By the time we got to Yvorne, Angus' leg was painful and so we took a bus to Aigle and from there the train to our accommodation.

For more information and photos, see [Angus&Sue's website](#)

## Protected areas

Federal landscape inventory

Tour d'Aï-Dent de Corjon

Federal landscape inventory

Les Grangettes (VD,VS)

## Takeaway route for iPhone and Android



Scan QR code, save this route  
offline, share with friends and  
more...

Website

<https://out.ac/lcbr7i>





Photo: Angus Carrick, Community

## Legend

### Topography

	Wood, forest
	Moor, swamp, marsh
	Heath
	Residential area with single building
	Industrial area with single building
	Cemetery
	Golf course
	Sportsfield, stadium
	Stadium
	Open-air pool
	Vineyard
	Petrograph
	Country border
	State border
	District border
	Contour line
	Special use area
	Nature reserve

### Topographic signs

	Summit cross
	Elevation point
	Rock
	Cave
	Church
	Chapel
	Cemetery
	Palace/Castle
	Abbey
	Monument
	Ruin
	Mine
	Cairn
	Broadcasting tower
	Windwheel
	Water-/windmill
	Viewpoint

### Road and track

	Motorway
	Highway
	Statat road
	Road
	Main agricultural road
	Agricultural road
	Trail
	Via Ferrata

### Lifts and railway

	Ropeway lift
	Gondola lift
	Chairlift
	Ski-, draglift
	Aerial ropeways
	Railway
	Suburban train
	Subway
	Tram
	Railway station